



CueScript™
A WAY WITH WORDS...

Prompters with style, People with passion

Contents

06	SOFTWARE
10	CONTROLS
14	CSMV2 IP SOLUTION
16	CSM PROMPTER MONITORS
18	TALENT MONITORS & TALENT MONITOR MOUNTS
20	EMC PROMPTER MONITORS
22	CSP10S - 10.4" HD-SDI PROMPTER
24	PTZ PROMPTER SYSTEMS
26	MOUNTING
30	COLLAPSIBLE HOOD
31	ACCESSORIES
34	SPEECH PROMPTERS

About CueScript

When choosing a prompting company what are the main factors in making your choice? Price, manufacturer, supplier, features, build quality, after sales support? What if a prompting company ticked all of these boxes? What if a new prompting company came to market with a new way of thinking, yet held old school values and consisted of a team that collectively had more experience in the prompting industry than any other. No legacy systems to support, just looking forward from day one... Welcome to CueScript!

CueScript is a prompting company with the personal touch.

With design for purpose, ingenuity and quality at the forefront, the CueScript team have developed a range of exciting products. Understanding the needs of the customer and listening to the end user are sometimes forgotten. We invite free thinking, we want to push boundaries and we have the drive and ability to promptly react to ideas or requests. So whether it be development of bespoke systems, or general progression, we are open to customer needs and requirements. Turning an idea into product is what we thrive on.

For CueScript customer service is paramount.

From initial contact to the installation of the product, every step should be met with the right information and attention to detail. Our goal is to build long term relationships and we will only achieve that by gaining your trust. We want to be the competent, dependable choice. The prompting company you can rely on to respect, listen, advise and deliver.

A new way of thinking.

We want to make a real difference to the user experience. CueScript Teleprompters and CueiT software offer a wealth of features for today's multipurpose productions. Providing the feature set in one complete system has been fundamental in our approach to the design. CueScript has had the unique advantage of starting from a blank canvas, inspiring fresh ideas derived from industry experience each member of the team has gained within all areas of production.

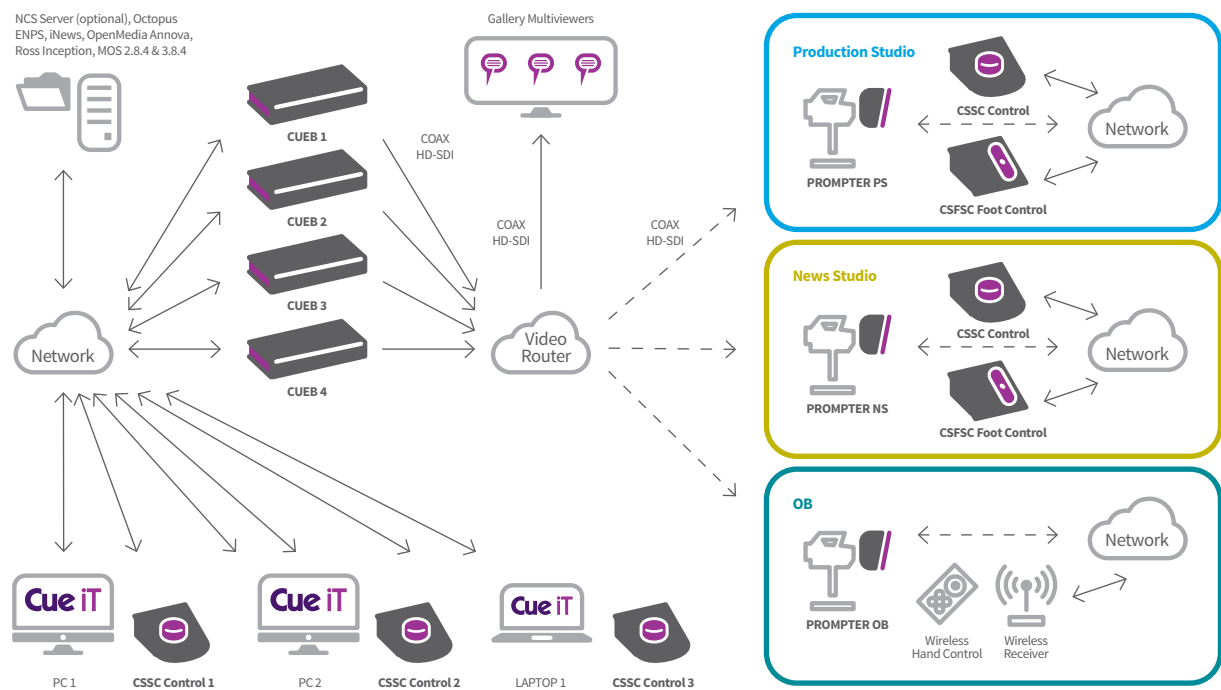
The IP Prompting Pioneers

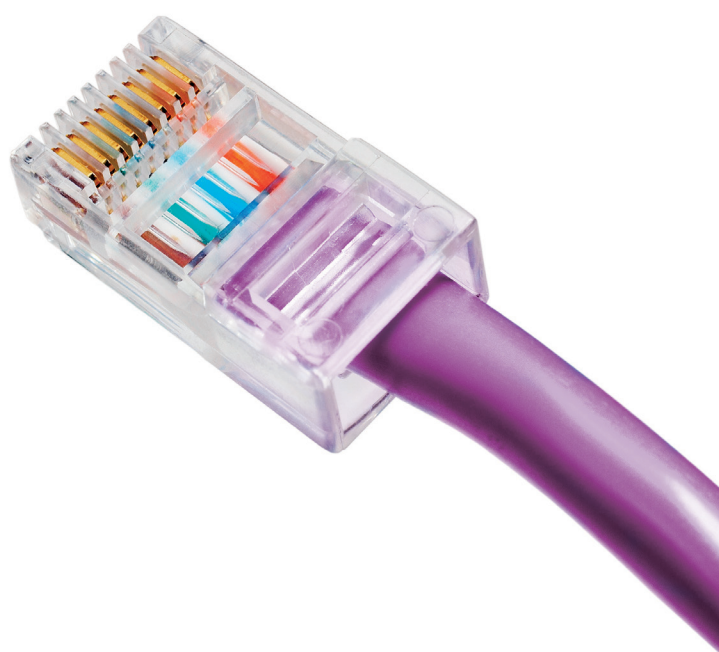
CueScript is home to the world's first complete IP-based prompting solution.

The move to IP is something we have been working on for some time; in fact, CueScript has been delivering the world's first fully IP-ready prompting solution since 2016.

While the IP future is a given, we recognise that not all broadcasters are able to transition their entire workflows instantly or completely. Our systems therefore have an all-in-one approach, allowing our customers to adopt an IP infrastructure today if they are ready, but feature conventional connections such as USB, BNC CAN Bus, HD-SDI and Composite video that many studios still require.

IP is here, but whether you are ready for it now or later, our systems will give you reliable and future-proofed prompting today.





IP-ready CueB & CueB openGear - The main hub of the CueScript IP-ready prompting solution system is the CueB and its openGear card version. Multiple CueBs can run independently or simultaneously and can be rack mounted as one unit, or in the openGear form. Connecting via Ethernet within the network infrastructure, they provide HD-SDI and Analogue signals as standard. (USB connectivity also available with the CueB device.)

IP-ready Scroll Controls - CueScript offer 4 scrolling devices to control the prompter: CSSC Desktop Control, CSFSC Foot Control, CSSCW Wireless Hand Control and CSFSCW Wireless Foot Control. All can connect via Ethernet, USB locally to the computer, or CAN Bus over coaxial cable to the CueB/openGear, offering complete plug and play connectivity.

IP-ready Prompt Monitors - The IP option continues throughout our range of IPCSM high brightness prompter displays, which use metadata to send the text to the prompt monitor. As such, this low data-rate stream is not a real-time audio/video stream, but a render description language. This provides significant advantages as it does not load the IP infrastructure, nor does it require network configuration above conventional business IT connectivity. Along with their Ethernet connectivity the IPCSM monitors also have HD-SDI and Composite video inputs.

Configuration and management of the IP devices is controlled within the CueiT application. User and access rights can be set in each instance of the CueiT application. A simple drop-down window displays the CueScript IP devices available in the facility or on a location, and there is no limit to the quantity or distance within network infrastructure.



CueiT Software

CueScript CueiT Software

A truly operator and production friendly prompting software has been born! CueiT has been developed with a deep understanding of what it is to be a prompt operator.

Simplicity of visual content, yet intensely packed with necessary and useful features, all of which can be easily viewed and accessed within the one screen – that was the task we gave ourselves and achieved in CueScript style. CueiT has a different structure to that of other prompting software, but upholds a familiar feel with ribbon menus and shortcuts, making it extremely user friendly.

Having had hands on experience, the development team share a vast knowledge from the studio floor to newsrooms and corporate work alike. To suit all types of production there are 3 versions of CueiT to choose from: CueiT Premier, Production and News

The powerhouse of CueiT is the 'CueB' - CueScript's external interface device - creating the world's first complete IP-based prompting solution to support you for today and tomorrow (see pages 8-9).

CueiT Messaging Centre CueiT Timer Clock Interface License

This new function of the user-friendly CueiT prompting software allows messages and timings to be displayed on the prompter.

The messages are displayed on the prompter output as overlay to the scrolling script. Single or multiple messages can be displayed individually or simultaneously. They are fully configurable within the Styles Menu of CueiT, giving operators the ability to define the position on screen, size, font, colours and formatting.

In addition to text messaging, operators can provide time information both in the form of a clock - sourced from a local PC clock or internal/external NTP server - and a timer via the MasterClock RC600 device.

- Compatible add-on for all CueiT license types.
- Includes interface for control via the MasterClock RC600 count device (MasterClock RC600 available for purchase from MasterClock).



To suit all types of production there are 3 versions of CueiT to choose from:

Cue iT Premier

Suitable for:	Education, middle market, corporate.
Output:	Video via a secondary graphic card output either direct from the customer's laptop/PC or via a converter e.g. HDMI/DVI/VGA to SDI/Composite.
Includes:	CueiT Premier software, license key (dongle) and the CSSC desktop scroll control.

Cue iT Production

Suitable for:	Studio facilities, light entertainment, game shows, sport, live productions and conferences.
Connections:	USB and Ethernet.
Output:	Composite video and HD-SDI as standard.
Includes:	CueiT Production software, CueB and the CSSC desktop scroll control.

Cue iT News

Suitable for:	News, MOS connectivity and all productions using a Newsroom Computer System (NRCS).
Connections:	USB and Ethernet.
Output:	Composite video and HD-SDI as standard.
Includes:	CueiT News software, CueB and the CSSC desktop scroll control.



CueB & openGear CueB

CueB

CueScript Prompting Software Interface Device

The CueB is the hub of the CueScript prompting system, activating the CueiT software, enabling prompt output and control of the prompt output.

Connecting via Ethernet or USB, the CueB has a built in VDA (video distribution amplifier) offering 2 analogue video outputs and 2 HD-SDI outputs as standard. The sleek styled box allows connectivity of an unlimited number of scroll controls, wired or wireless, via Ethernet, CAN Bus over coaxial cable, or USB (direct to the computer), providing interchangeable control preference.

Multiple CueB devices can run independently or simultaneously and a rack mount for the CueB is available.

The CueB is included in both the CueiT Production and CueiT News software packages.

- Connects via Ethernet or USB.
- Analogue and HD-SDI outputs as standard.
- Rack mountable.

Specification

- CueB Dimensions: 37cm x 18cm x 4.3cm.
- Power Input: 12V XLR.
- Connections included are: 2 x Analogue/Composite, 2 x HD-SDI, 2 x Ethernet, 2 x USB3.0 A, 1 x USB3.0 B, 1 x CAN Bus.
- CueScript Scroll Controls connect via Ethernet, CAN Bus over coaxial cable, or USB direct to the computer.



openGear CueB

An openGear compatible card for prompt output interface and software license for CueiT.

The CueScript openGear Card is an alternative to the CueScript CueB that forms the hub of the CueScript IP teleprompting setup, bringing new levels of integration to studio builds, advantages in power, connectivity and reducing the physical footprint.

The openGear card is mounted in an openGear frame, significantly saving rack unit space. Studios can now deploy up to 10 prompting channels in just 2U of rack space.

Featuring Ethernet interface to CueiT, multiple control connectivity via IP, CAN Bus (direct to the openGear card), or USB direct to the CueiT computer, and enabling the prompt signal with Composite and HD-SDI video outputs.

Specification

- OpenGear Card Architecture; 1 slot width.
- Connections included are: 1 x Analogue/Composite, 2 x HD-SDI, 1 x Ethernet, 1 x CAN Bus.
- Powers via OpenGear Rack.
- CueScript Scroll Controls connect via IP, CAN Bus over coaxial cable (direct to the openGear card), or USB direct to the CueiT computer.
- Interface to CueiT via IP only.
- USB port input for configuration menu.


openGear



Controls

CSSC – CueScript Desktop Scroll Control

CueScript's desktop control device that adjusts the speed and direction of scrolling text on the prompter, featuring quick command buttons that allow navigation around the script and trigger configurable commands.

The CSSC control is used by the prompt operator, whose role can be extremely intense and highly pressured. The CSSC was created by focussing on the operator's workflow and the tools they need.

Included with all CueiT software packages and can connect to the CueScript Foot Control (CSFSC) to be used as a deskpad.

- Ergonomically designed to reduce fatigue and RSI.
- Connects via USB, Ethernet and CAN Bus over coaxial cable to the CueB (CueScript's prompting software interface device).
- Controls commands within CueScript's CueiT software.
- When using CueiT Premier only USB connection direct to laptop/PC is possible.

Specification

- 8 Buttons for operator or presenter control: Next Story, Previous Story, Top of Runorder, Blank Screen, Next Marker, Previous Marker and 2 x configurable command buttons.
- USB, Ethernet and CAN Bus over coaxial cable connectivity when using CueiT Production or CueiT News.
- Ethernet and USB connectivity only when using CueiT Premier.
- 12v XLR input (required when employing Ethernet or CAN Bus).
- RJ11 connection to the CueScript CSFSC Foot Control.



CSFSC – CueScript Foot Scroll Control

CueScript's foot control device that operates and adjusts the speed and direction of scrolling text on the prompter.

With a stylised and sturdy design employing the very latest components for durability and reliance, the CSFSC foot control uses a capacitive encoder (CE) to give finite control and 100% reliability. Much like an accelerator pedal, the further the pedal is pushed, the faster the scroll of text. Carefully designed and engineered to provide the optimal balance of sensitivity, resistance and comfort, whether standing or seated.

The CSFSC can connect to the CueScript Desktop Scroll Control (CSSC) to act as a presenter desk pad. This means quick command buttons can be easily accessed by the presenter. These allow navigation around the script and trigger configurable commands within CueScript's CueIT software.

- Capacitive encoder technology for super smooth scrolling.
- Connects via USB, Ethernet and CAN Bus over coaxial cable to the CueB (CueScript's prompting software interface device).
- RJ11 port allows connection to the CSSC Desktop control for use as a deskpad.

Specification

- Capacitive encoder gives 100% reliability and a lifetime guarantee.
- USB, Ethernet and CAN Bus over coaxial cable connectivity when using CueIT Production or CueIT News.
- 12v XLR input (required when employing Ethernet or CAN Bus).
- Reverse button offers immediate reverse action.
- RJ11 connection from the CSFSC to the CueScript Desktop Scroll Control (CSSC) to offer 8 buttons for presenter control: Next Story, Previous Story, Top of Runorder, Blank Screen, Next Marker, Previous Marker and 2 x configurable command buttons.
- For use with CueIT Premier, CueIT Production and CueIT News.



Wireless Controls

CSSCW – Wireless Hand Scroll Control

CueScript's wireless hand control is a hand-held device designed to be used by the presenter/speaker to adjust the speed and direction of scrolling text on the prompter.

The CSSCW wireless hand control features a slider which provides easy adjustment of speed and direction of scroll, increased control and a comfortable, ergonomic feel.

Quick command buttons are at the presenters'/speakers' fingertips for fast navigation around the script and the ability to trigger configurable commands.

Due to the CSSCW control being wireless and hand-held it allows for freedom of movement whilst maintaining control of the prompt.

As with all CueScript scroll controls, the CSSCW receiver unit has Ethernet connectivity, as well as USB and CAN Bus.

Specification

- Frequency: 915MHz (US model) and 868MHz (ROW) as standard. 433MHz available on request.
- Distance: Up to 300m for 868MHz and 100m for 915MHz from transmitter (Wireless Hand unit) to the receiver (Receiver unit).
- The protocol allows multiple transmitter/receiver combinations to occupy the same frequency without interfering with each other.
- The Receiver unit can be connected to the CueiT software via USB, Ethernet or CAN Bus over coaxial cable.
- Wireless Hand unit features a slider for forward and reverse scrolling and buttons for Next Story, Previous Story, Top of Runorder and Blank Screen.
- The system has a duplex capability to give information back/forth to the controller and system. It can report an error at the receiver when a transmitter is out of range or has been switched off for more than 30 seconds.



CSFSCW – Wireless Foot Scroll Control

CueScript's wireless foot control device that operates and adjusts the speed and direction of scrolling text on the prompter.

This wireless version of the CueScript foot control allows for freedom of prompting location. Like an accelerator pedal, the further the pedal is pushed, the faster the scroll of text.

With a stylised and sturdy design, employing the very latest components for durability and reliance to give finite control and super smooth scrolling, the CueScript foot pedal has been carefully designed and engineered to provide the optimal balance of sensitivity, resistance and comfort, whether standing or seated.

As with all CueScript scroll controls, the CSFSCW receiver unit has Ethernet connectivity, as well as USB and CAN Bus.

Specification

- Frequency: 915MHz (US model) and 868MHz (ROW).
- Distance: Up to 300m for 868MHz and 100m for 915MHz from transmitter (Wireless Foot pedal) to the receiver (Receiver unit).
- The protocol allows multiple transmitter/receiver combinations to occupy the same frequency without interfering with each other.
- The Receiver unit can be connected to the CueIT software via USB, Ethernet or CAN Bus over coaxial cable.
- Foot pedal features a reverse button which provides immediate reverse action, instead of a switch.
- Operates from an internal battery, or from the external 12V DC battery pack which can provide emergency wireless charge. (Can also be connected to an external 12V DC mains power source if required.)
- Typically 30 hours of continuous use on internal batteries with full charge (depending on battery age).
- Foot Control goes into a battery reserve mode when not in use.



CSMV2 Prompter Monitors

The CueScript SMPTE 2110 IP System

The CSMV2 is the industry's first native SMPTE 2110-enabled prompting monitor. With a patent-pending, this new range from CueScript makes our system even more flexible for the end user, revolutionising the way prompting can be used and future-proofing the purchase.

As per our ethos, conventional connectivity remains as standard for total connectivity flexibility; SMPTE 2110 IP, CAT5/6 Ethernet (CueTALK), HD-SDI, Composite, HDMI, all native in one complete system, without the need for converters or additional boxes.

If you're looking at all-SMPTE IP installations you no longer have to rely on SDI-SMPTE gateway converters, thus allowing the CSMV2 a seamless interconnection with 10GigaBit fibre IP switches. This allows both the prompt and talent monitor to be fed from a single 10GB fibre cable, even when the talent monitor is an existing SDI-only display. CSMV2 'decapsulates' the 2110 on-air/talent feed sent as a second IP stream on the cable, and outputs it as a traditional SDI video signal.

For customers that want IP flexibility but do not have a 10GB IP-based video switch, the CSMV2 also includes CueScript's innovative IP connectivity now referred to as CueTALK, which provides seamless operation through standard CAT5/6 IT infrastructure.

Accompanying the CSMV2 monitor, for a complete end-to-end solution, is a SMPTE 2110 IP-enabled CueB, the company's software interface device which produces the scrolling script video signal.

- IP connectivity choice: SMPTE 2110 IP and CueTALK (CAT5/6 IP)
- IP input is small data packets only, no video transmission
- Native connections remove the need for converters or additional boxes, resulting in a more efficient setup with less failure points.
- Conventional video connections included as standard
- Uses around 35% less power





CSM Prompter Monitors - LED High Brightness HD-SDI

CueScript prompters blend style with practicality, resulting in a balance of design for purpose, performance, ingenuity and quality.

The CSM monitors have a low-profile design that not only looks great but is robust and durable. High brightness and high contrast ratio LED edge-lit screens deliver superb picture quality. A unique dual curved cue light window system enhances the ability for all studio personnel to see the active prompter. The quick, no-tools mounting system instantly installs the prompter to the mount and doubles as an external heat sink, keeping the prompter internal temperature low. Low energy consumption and power saving modes allow use where power is limited, such as when powering from the camera. A built-in "T" rail mounting system offers the ability to easily add a Talent Monitor and/or Time Display.

The CueScript CSM Monitors provide maximum flexibility of system integration, as demanded by professional prompter users, setting CueScript apart from all others.



CSM15

Technical Specifications

Screen Size	15" diagonal
Brightness	1500 cd/m ²
Contrast Ratio	700:1
Native Resolution	1024 x 768 (XGA)
Viewing Angle	160°(H), 140°(V)
Backlight Technology	High Brightness LED with backlight saver mode
Controls	Illuminated LED push-buttons with adjustable brightness

Dimensions

Front to Back	11.52" (292mm)
Right to Left	14.16" (360mm)
Depth	2.67" (68mm)
Monitor only weight	6.6lbs/3kg
Complete weight with Large Hood, Glass & Mount Purple	20.6lbs/9.4kg

Video

Autosensing	PAL/NTSC/VGA/HDMI/HD/HD-SDI
Looping video output	Composite 75 Ohms HD-SDI & Composite

Power Inputs & Connectors

Internal PSU	IEC Wide Range 100-264 AC & 150VDC XLR 4pin 12v DC 3.3A min(40w) 5.5A max(66w)
--------------	---

Power Consumption

3 Mode adjustable power input	Low - 17 Watts Medium - 19 Watts High - 24 Watts
-------------------------------	--

Additional Connectors

Tally DC Out	Dual USB 5V
Tally Sensor	Mini USB Tally Sensor, 5-12V Tally input
4 Pin XLR DC Out	12V 4A = 48 Watts

Certifications

CE, TUV, FCC, C-Tick, PSE, RoHS

Mounting

Integrated "On Air" Talent Monitor mounting rails.
CueLock mounting system built in for fast, secure setup and release.

*All specifications are subject to change



CSM17

Technical Specifications

Screen Size	17" diagonal
Brightness	1500 cd/m ²
Contrast Ratio	1000:1
Native Resolution	1280 x 1024 (SXGA)
Viewing Angle	170°(H), 160°(V)
Backlight Technology	High Brightness LED with backlight saver mode
Controls	Illuminated LED push-buttons with adjustable brightness

Dimensions

Front to Back	13.5" (344mm)
Right to Left	15.57" (395mm)
Depth	2.67" (68mm)
Monitor only weight	7.5lbs/3.4kg
Complete weight with Large Hood, Glass & Mount Purple	22.5lbs/10.2kg

Video

Autosensing	PAL/NTSC/VGA/HDMI/HD/HD-SDI
	Composite 75 Ohms
Looping video output	HD-SDI & Composite

Power Inputs & Connectors

Internal PSU	IEC Wide Range
	100-264 AC & 150VDC
	XLR 4pin 12v
	DC 3.3A min(40w) 5.5A max(66w)

Power Consumption

3 Mode adjustable power input	Low - 27 Watts
	Medium - 31 Watts
	High - 39 Watts

Additional Connectors

Tally DC Out	Dual USB 5V
Tally Sensor	Mini USB Tally Sensor, 5-12V Tally input
4 Pin XLR DC Out	12V 4A = 48 Watts

Certifications

CE, TUV, FCC, C-Tick, PSE, RoHs

Mounting

Integrated 'On-Air' Talent Monitor mounting rails.
CueLock mounting system built in for fast, secure setup and release.

*All specifications are subject to change

CSM19

Technical Specifications

Screen Size	19" diagonal
Brightness	1500 cd/m ²
Contrast Ratio	1000:1
Native Resolution	1280 x 1024 (SXGA)
Viewing Angle	170°(H), 160°(V)
Backlight Technology	High Brightness LED with backlight saver mode
Controls	Illuminated LED push-buttons with adjustable brightness

Dimensions

Front to Back	14.51" (368mm)
Right to Left	16.92" (430mm)
Depth	2.67" (68mm)
Monitor only weight	11.2lbs/5.1kg
Complete weight with Large Hood, Glass & Mount Purple	23.6lbs/10.7kg

Video

Autosensing	PAL/NTSC/VGA/HDMI/HD/HD-SDI
	Composite 75 Ohms
Looping video output	HD-SDI & Composite

Power Inputs & Connectors

Internal PSU	IEC Wide Range
	100-264 AC & 150VDC
	XLR 4pin 12v
	DC 3.3A min(40w) 5.5A max(66w)

Power Consumption

3 Mode adjustable power input	Low - 32 Watts
	Medium - 36 Watts
	High - 45 Watts

Additional Connectors

Tally DC Out	Dual USB 5V
Tally Sensor	Mini USB Tally Sensor, 5-12V Tally input
4 Pin XLR DC Out	12V 4A = 48 Watts

Certifications

CE, TUV, FCC, C-Tick, PSE, RoHs

Mounting

Integrated 'On-Air' Talent Monitor mounting rails.
CueLock mounting system built in for fast, secure setup and release.

*All specifications are subject to change



Talent Monitors & Talent Monitor Mounts

In recent years the introduction of talent monitors hung under the prompter has become increasingly popular, tidying up the studio floor and preventing the talent having to look off camera.

CueScript Talent Monitors have been built for purpose with a slim and aesthetically pleasing curved design. Available in 19" (CSTM19) and 24" (CSTM24). Power to the CSTM19 can be taken from CueScript's CSM range of prompters and integrated mounting rails allow for smooth, quick setup.

Each Talent Monitor has a corresponding mount. These Talent Monitor Mounts are super lightweight but incredibly strong, providing secure fixing for the CueScript Talent Monitors. The mount slides into the in-built rails of the CSM monitors with ease and 3 axis movement allows for full adjustability. Standard VESA mount incorporated.

CSTM19

Technical Specifications

Screen Size	18.9" diagonal
Display Area	408.24mm(H) x 255.15mm(V)
Brightness	1000 cd/m ²
Contrast Ratio	1000:1
Native Resolution	1440 x 900 (WXGA)
Viewing Angle	170°(H), 160°(V)
Backlight Technology	LED

Dimensions

Height	12.75" (324mm)
Width	18.25" (464mm)
Depth	1.9" (48mm)
Weight	8.5lbs/3.8kg

Video

Autosensing	PAL/NTSC/VGA/HD/HD-SDI Composite 75 Ohms
-------------	---

Power Inputs & Connectors

XLR 4pin 12V DC

Certifications

CE, TUV, FCC, C-Tick, PSE, RoHs

Mounting

Slides into the CueScript CSM monitor range via integrated rails using the CSTMM mount.
Can attach to the CueScript EMC Monitor range with a modification.

*All specifications are subject to change



CSTMM – Mount for CSTM19



CSTM24

Technical Specifications

Screen Size	24.1" diagonal
Display Area	518.4mm(H) x 324mm(V)
Brightness	1200 cd/m ²
Contrast Ratio	1000:1
Native Resolution	1920 x 1200 (WXGA)
Viewing Angle	178°(H), 178°(V)
Backlight Technology	LED

Dimensions

Height	16" (406mm)
Width	23" (584mm)
Depth	2.2" (56mm)
Weight	10lbs/4.53kg

Video

Autosensing	PAL/NTSC/VGA/HD/HD-SDI Composite 75 Ohms
-------------	---

Power Inputs & Connectors

AC mains with internal power supply

Certifications

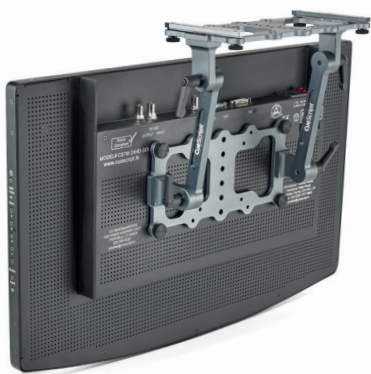
CE, TUV, FCC, C-Tick, PSE, RoHS

Mounting

Slides into the CueScript CSM monitor range via integrated rails using the CSTMML mount.

*All specifications are subject to change

CSTMML – Mount for CSTM24



EMC Prompter Monitors

The EMC monitors are a simplified version of our high end CSM monitor range, suitable for educational, middle markets & corporate use.

With the same CueScript principles of style, quality and ease of use, the EMC range of monitors are sleek, lightweight and extremely easy to set up, courtesy of the built in CueLock feature. Offering excellent image and scroll quality, the EMC monitor is the only middle market prompter with the level of features and quality needed for a mission critical product.



EMC15

Technical Specifications

Screen Size	15" diagonal
Brightness	400 cd/m ²
Contrast Ratio	700:1
Native Resolution	1024 x 768 (XGA)
Viewing Angle	160°(H), 140°(V)
Backlight Technology	LED
Controls	Illuminated LED push-buttons with adjustable brightness

Dimensions

Front to Back	11.86" (301mm)
Right to Left	14.24" (362mm)
Depth	1.8" (46mm)
Monitor only weight	5.2lbs/2.4kg
Complete weight with Large Hood, Glass & Mount Purple	18.2lbs/8.3kg

Video

Autosensing	PAL/NTSC/VGA/HDMI Composite 75 Ohms
-------------	--

Power Inputs & Connectors

DC Power Input	1.3 A / 15.6 Watts
DC Power Connector	2.5mm x 5.5mm Center Positive

Additional Connectors

USB - DC Out	USB-A 5V
--------------	----------

Certifications

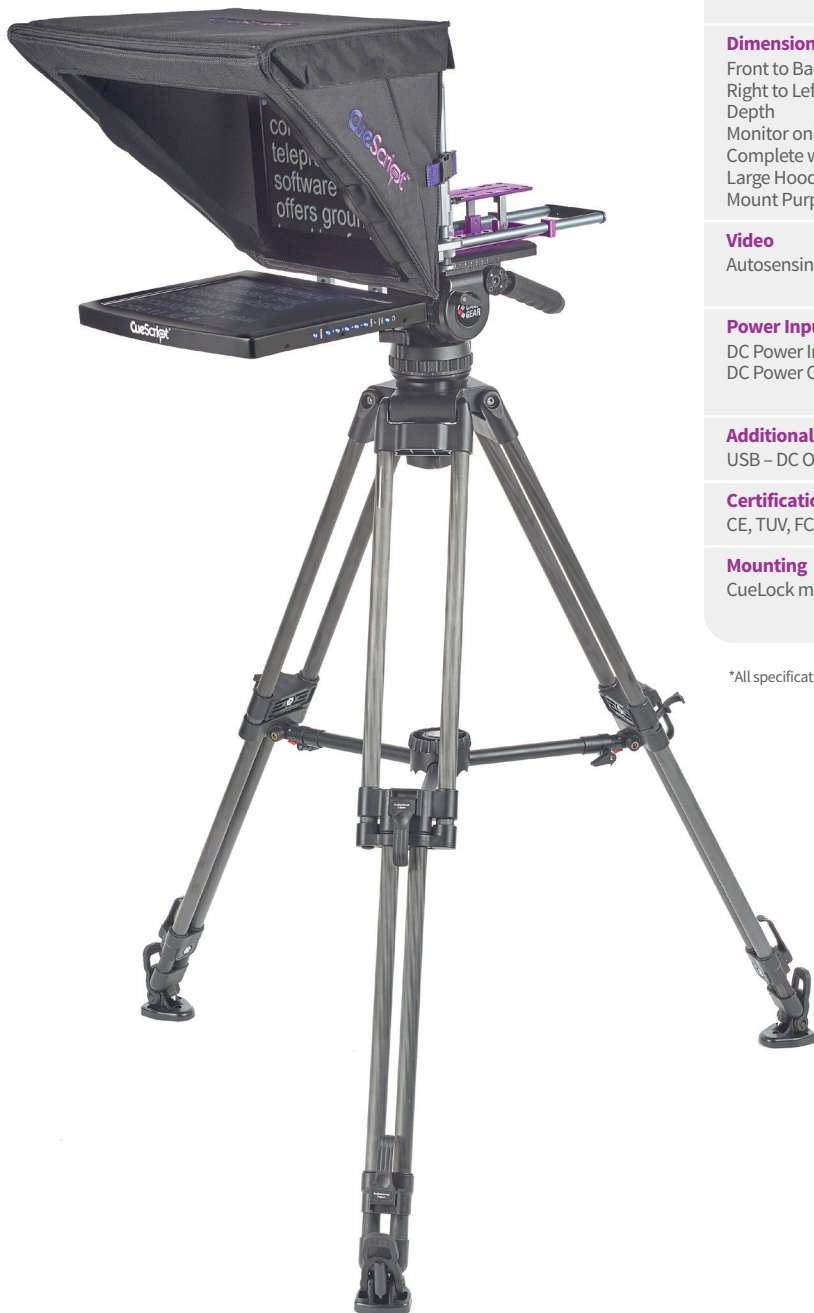
CE, TUV, FCC, C-Tick, PSE, RoHs

Mounting

CueLock mounting system built in for fast, secure setup and release.

*All specifications are subject to change





EMC17

Technical Specifications

Screen Size	17" diagonal
Brightness	350 cd/m ²
Contrast Ratio	800:1
Native Resolution	1280 x 1024 (SXGA)
Viewing Angle	170°(H), 160°(V)
Backlight Technology	LED
Controls	Illuminated LED push-buttons with adjustable brightness

Dimensions

Front to Back	13.82" (351mm)
Right to Left	15.5" (394mm)
Depth	1.8" (46mm)
Monitor only weight	6.8 lbs / 3.1kg
Complete weight with Large Hood, Glass & Mount Purple	19.8 lbs / 9kg

Video

Autosensing	PAL/NTSC/VGA/HDMI Composite 75 Ohms
-------------	--

Power Inputs & Connectors

DC Power Input	1.9 A / 22.8 Watts
DC Power Connector	2.5mm x 5.5mm Center Positive

Additional Connectors

USB – DC Out	USB-A 5V
--------------	----------

Certifications

CE, TUV, FCC, C-Tick, PSE, RoHs

Mounting

CueLock mounting system built in for fast, secure setup and release.

*All specifications are subject to change

CSP10S – 10.4” HD-SDI Prompter

Compatible with CueScript CSMPs Small Mount Purple and CSHCS Small Collapsible Hood only. Included in the CSP10S package.

Small, slim and lightweight, the CSF10SDI 10.4” CueScript Monitor boasts a 1500nits, 3000:1 contrast ratio LED screen, making it easy to read even in very bright daylight conditions. It also features CueScript’s CueLock mounting system for swift, secure setup. Intelligent cue lights feature on the front and top of the monitor and are automatically switched to either direction by a built-in motion sensor (accelerometer). So, whether horizontal as a Teleprompter or vertical as straight-reader, the correct integrated cue light is automatically triggered.

The CSF10SDI Monitor is included in the CSP10S prompter package; a compact, portable yet fully featured prompting system.

Each part of the CSP10S has been carefully designed to create the best professional lightweight prompter on the market. Due to the compact size, we opted for a square prompter glass panel to maximise the wide-angle camera shots achievable. However, with the incorporated straight reader mount, if the hood isn’t clearing the widest shot required, you can swiftly and very simply remove the hood and convert to a straight-reader above the lens.

The CSP10S prompter is adaptable to all cameras/lenses/shots, which makes it perfect for outside broadcasts (OB’s), jibs and cranes.

CSF10SDI

Technical Specifications

Screen Size	10.4” diagonal
Brightness	1500 cd/m2
Contrast Ratio	3000:1
Native Resolution	1024(H) x 768(V)
Viewing Angle	180°(H), 180°(V)
Backlight Technology	High Brightness LED
Reverse/Rotation	4-way picture orientation Tilt switch activator - automatically switches when unit is vertical or horizontal

Dimensions

Front to Back	8.2” (208.3mm)
Right to Left	10.35” (262.9mm)
Depth	1.85” (47mm)
Monitor only weight	2.6lbs/1.2kg
Complete CSP10S prompter weight	10.3lbs/4.7kg

Video

Autosensing	PAL/NTSC/VGA/DVI/HDMI/HD/HD-SDI Composite 75 Ohms
-------------	--

Power Inputs & Connectors

Barrel connector	2.5mm ID/5.5mm OD
------------------	-------------------

Power Consumption

1.2A @12V DC, 14.4 Watts

Additional Connectors

DC Out:	USB 5V
Tally Sensor:	Mini USB - with cue light sensitivity control

Certifications

CE, FCC, C-Tick, PSE, RoHS

Mounting

CueLock mounting system built in for fast, secure setup and release.
--





The items and features included in the CSP10S Prompter package:

10.4" Prompter Monitor (CSF10SDI)

- 10.4" screen at 2.2lbs/0.9kg - slimmer and lighter in weight than any other professional prompt monitor.
- Very bright LED prompt monitor screen at 2000nits.
- No fans required, so no moving parts.
- Autosensing video inputs: Composite (PAL/NTSC), VGA, DVI and HDMI.
- 5v USB out and mini USB power for cue light sensor, with cue light sensitivity adjustment control.
- Built-in intelligent cue lights for use with hood or as a straight reader.



Small Collapsible Hood (CSHCS)

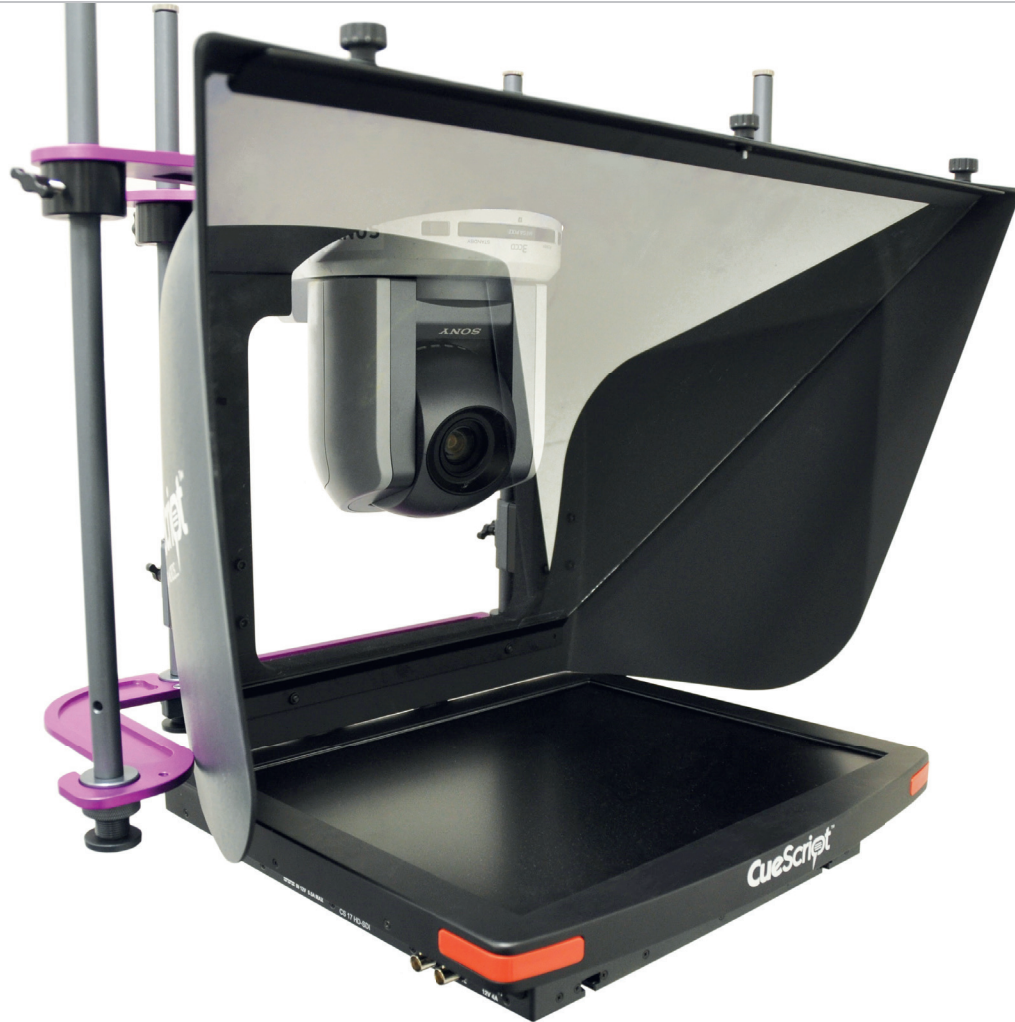
- Fully collapsible, easily transportable small prompter hood.
- Simple and swift to setup and remove.
- A square prompter glass panel allows for most wide angle camera shots.
- Detachable light shielding side flaps are stored in a discreet pocket within the hood - convenient for when reading in strong daylight.



Small Mount Purple Plate (CSMPS)

- The small Mount Purple plate is designed with the same quick release features as the larger versions.
- An incorporated straight reading bracket means the system can instantly be changed to a straight reading prompter.
- The mounting system is rock solid, giving crane and jib operators the assurance of no movement or wobble at the end of a camera move.

PTZ Prompter Systems



Until now using a prompter display with a PTZ camera restricted the operation of the PTZ, as these cameras are not designed to work with prompting units.

CueScript has set about to turn this problem on its head... literally!

With a patent pending, CueScript has developed a unique mounting system whereby the PTZ camera mounts upside down in the top of a specially designed prompter hood.

Mounting the system in this way removes the operational limitations of a PTZ camera within a prompter; the PTZ has greater movement in the shots it can achieve.

An additional bonus is that using a prompter with a PTZ camera no longer requires high payload taking, expensive tripods, as the CueScript PTZ Mount makes using a lighting stand possible.

- Unique patent pending mounting system increases the operational movement of a PTZ camera within a prompter.
- Available with a choice of 15", 17" or 19" CueScript monitors.
- Wall-mount version also available.

Included in the CueScript PTZ Prompter System:

CueScript PTZ Mount for tripod and lighting stand (CSMPTZ)

CueScript PTZ Hood (CSHPTZ)

CueScript Monitor (EMC15, EMC17, CSM15, CSM17 or CSM19)

PTZ Prompter System part numbers and weights:

(PTZ camera not included)

With the **EMC Monitor** range

EMCP15PTZ
15" EMC PTZ Prompter System
9.6kg / 21.1lbs

EMCP17PTZ
17" EMC PTZ Prompter System
10.2kg / 22.5lbs

With the **CSM Monitor** range

CSP15PTZ
15" CSM PTZ Prompter System
11.1kg / 24.5lbs

CSP17PTZ
17" CSM PTZ Prompter System
12kg / 26.3lbs

CSP19PTZ
19" CSM PTZ Prompter System
12.4kg / 27.3lbs



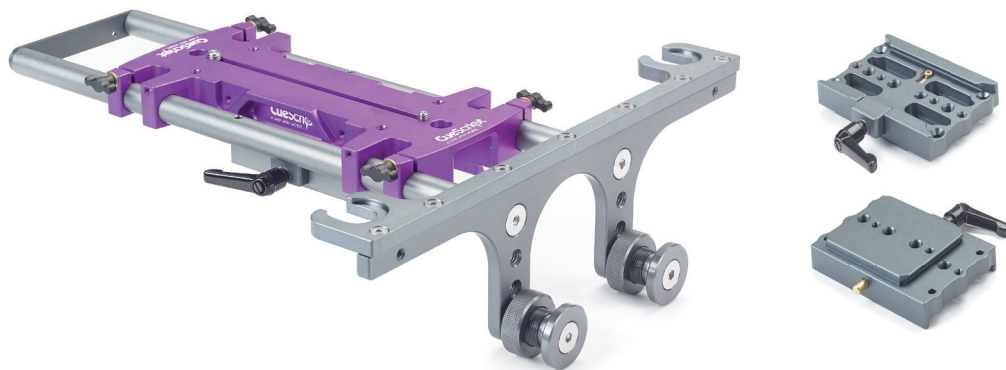
Mounting

CSMPL – Large Mount Purple plate

The CueScript Mount Purple has been designed with ease of use in mind, allowing seamless setup and balance without the use of tools.

A quick release camera plate forming is machined into the Mount Purple so fiddly screws are a thing of the past! The mounting plate acts as an additional heat sink to help dissipate the heat generated by the monitor, aiding the monitor longevity. If required a matching riser plate can be attached to the Mount Purple.

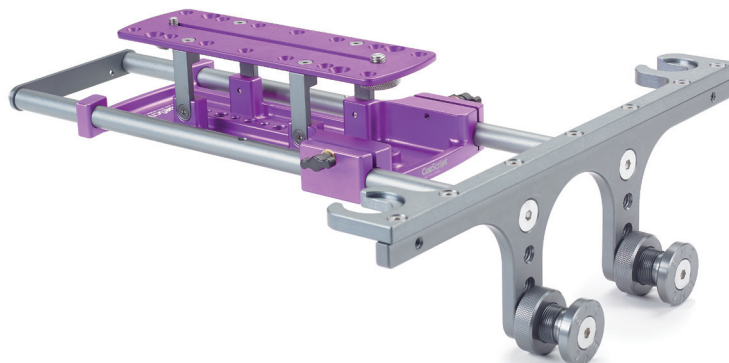
- CueLock feature for easy, fast and secure mounting.
- Fully adjustable for all fluid heads.
- Compatible with Medium and Large Hoods (CSHM and CSHL), and Collapsible Hoods (CSHCM and CSHCL), which are all easily interchangeable.



CSMPM – Medium (EMC) Mount Purple plate

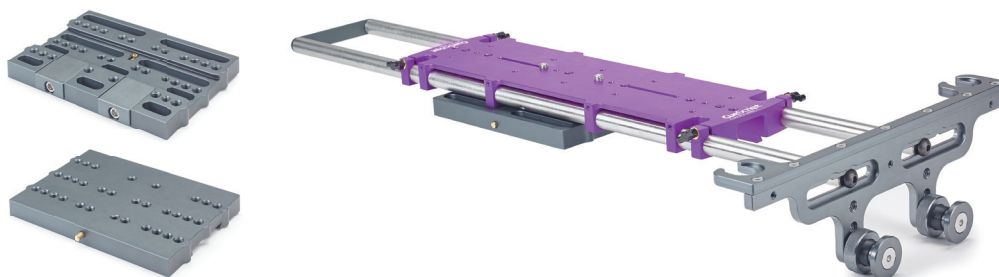
Compatible with CueScript EMC Monitors only.

Suitable for lightweight setups and has a fixed height riser plate attached.



CSMPXL – Extra-large Mount Purple plate

For full size studio cameras with large super box lenses.



Mount Purple Riser Plates – 3 options of camera riser plate heights for CSMPXL Small (3") - CSMPRS, Medium (4") - CSMPRM, Large (6") - CSMPRL



Telescopic Mounting Rods – 7" - CSTRM & 12" - CSTRL T-Rods for use with large studio heads



Mounting

CSRHS & CSRHSXL – Robotic Hood Supports

Support arms for use with robotic heads.

Lightweight but robust support arm to help further secure the prompter on a robotic head. The Robotic Hood Support comes in two sizes to accommodate all camera and lens setups. They simply attach to the Mount Purple (CSMPL and CSMPXL) plate and the hood rod, and can be adjusted to achieve optimum rigidity.



CSRA – Roll Around Stand

Wheeled stand that allows use of a full size prompter without mounting to tripod and camera.

The CSRA stand enables small, lightweight rigs or locked off shots to still have the use of a prompter. A prompt monitor and hood can be mounted directly to the CSRA stand, courtesy of a bespoke stand mount. Wheels on the steel legs enable you to roll the prompter in and out of position in front of the camera. The wheels can also be tucked away to create a static stand if required and height can easily be adjusted.

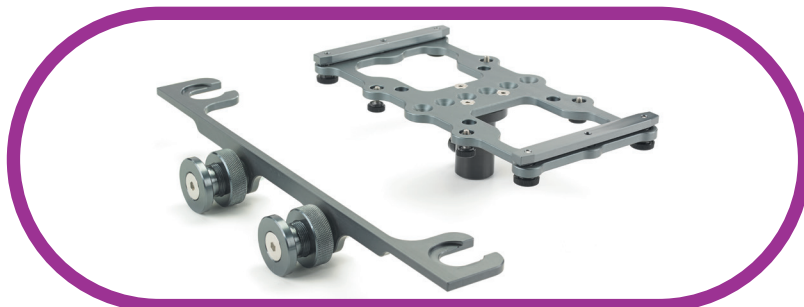
- Great for small rigs with lightweight heads and low payload tripods.
- Perfect for locked off shots.
- Fold away wheels allow for easy movability and positioning, as well as a static stand option.



**CSRA with
EMC17 monitor**



**CSRA with
CSM19 monitor**



CSRAMT – Stand Mount
For mounting a CSM prompter onto a stand

Collapsible Hood

The CueScript Collapsible Hoods are perfect for portable use.

The Collapsible Hoods are super simple to rig and can easily be transported with the glass in place. Available in small, medium and large sizes.

- **CSHCS - Small Collapsible Hood**
Perfect for jibs/cranes and small, lightweight setups. Use with CueScript Small Glass.
- **CSHCM - Medium Collapsible Hood**
Lightweight and portable full size prompter hood. Use with CueScript Medium Glass.
- **CSHCL - Large Collapsible Hood**
Portable large prompter hood for wide angle and box lenses. Use with CueScript Large Glass.



Bespoke wheeled flight case for the collapsible prompter system



Accessories

CSCN – CueScript CueNumber

Double digit alphanumeric tally cue light.

The CueScript CueNumber tally system is powered by mini USB and designed to plug directly into the USB output connector on the CueScript monitors. The green numbers and/or letters will change to red when the tally signal is received. LED brightness is adjustable.



CSTD – CueScript Time Display

Digital time code display with tally feature.

The CueScript Time Display has a 12 or 24 hour mode selection and doubles as a cue light, taking the camera tally signal via CueScript's photoelectric cell sensor or the wired camera tally. This changes the numbers from green to red when live/on air. It reads and displays VITC SMPTE time code both NTSC and EBU, and clock time can be externally set for when no VITC available. The CSTD Time Display mounts easily and directly to the CueScript CSM prompter range.

- VTC input and backup time kept with a 32kHz watch crystal.
- Power and VTC via mini USB direct from the CueScript monitor.
- Simple mounting to CueScript CSM Monitors.



Accessories

CSBW4 & CSBW4H – CueScript Counterbalance Weights

Counterbalance weights designed to attach to the rear of the Mount Purple plates.

Adjustment of the weight is simple and configurable by adding or reducing the specially designed weights. Their clever design mean that they can be angled and positioned to increase counterbalance but reduce the amount of physical weight required. There are 4 weights included in each set and they are available in 2 sizes:

- CSBW4 - Total weight of 13.9lbs/6.3kg
- CSBW4H - Total weight of 25lbs/11.3kg



It is suggested that you purchase a set of the 6" extension rods (CSMP6) for the Mount Purple plate when attaching counterbalance weights.



CSRPAW – CueScript Robotic Pan Arm Weight

Counterbalance weight with robotic pan arm receptacle.

- Total weight of CSRPAW: 7lbs/3.2kg.



Speech Prompters

CSSPS

CueScript Speech Prompter Stand

The manual CueScript Speech Prompter Stand is designed for use by Presenters, Public Speakers and Lecturers. It allows the speaker to address an audience or congregation confidently, factually and provides a reference to their script, without losing viewer engagement.

Clear prompter glass is placed within the glass holder on the telescopic pole and adjusted to a height suitable for the presenter. The glass is then angled so to reflect the monitor attached to the base of the stand, on which the script is scrolled. A surround shield then fits into place around the base to conceal the monitor from the audience. The script image can be seen only by the reader.

The CSSPS Speech Prompter Stand is lightweight and easy to transport, has a range of heights, easily adjusted and has a very smart appearance. The base features the CueScript CueLock mechanism to secure the monitor and the surround shield, and neatly folds away for simple transportation. All CueScript 15"-19" prompt monitors can be used with the CSSPS Speech Prompter Stand.

- Elegant telescopic stand that is lightweight and easy to transport.
- Ideal for award ceremonies, conferences and presentations.
- Enhances general presentation and audience interaction.

Suitable for use with all CueScript's prompting monitors from the EMC, CSM & IPCSM range: **EMC15, EMC17, CSM15, CSM17, CSM19, IPCSM17, IPCSM19.**



Each CueScript Speech Prompter Stand comes complete with:

- 1 x Adjustable Telescopic Stand
- 1 x Foldable base with CueLock feature
- 1 x Surround shield for monitor concealment
- 1 x Adjustable glass holder
- 1 x Speech Prompter Glass

Specification

- Minimum height: 72.4cm (28.5").
- Maximum height: 180.4cm (71").
- Weight of complete Speech Stand (without monitor): 6.2kg (13.8lbs).
- Base Size with Surround attached: W:50.2cm x D:55.9cm x H:32.4cm (W:19.75" x D:22" x H:12.75").
- Tilt: Manual adjustment.
- Speech Glass size: 25cm x 33cm (9.8" x 13").
- Attachment of CueScript EMC/CSM/IPCSM Monitor via CueLock mechanism.



Contact us

Please feel free to contact us if you have any questions, need a quote or just to say hello!

US OFFICE:

Tel: +1 (203) 763 4030
Fax: +1 (203) 987 3798
Email: ussales@cuescript.tv

Address:
555 Lordship Blvd,
Stratford, CT 06615, USA

UK OFFICE:

Tel: +44 (0)20 3757 8880
Email: uksales@cuescript.tv

Address:
Unit 15, First Quarter Business Park,
Blenheim Road, Epsom, Surrey
KT19 9QN, UK



www.cuescript.tv