



CueScript™
A WAY WITH WORDS...

Prompters with style, People with passion

Contents

- 04 IP PROMPTING AND CUETALK CLOUD
- 06 SOFTWARE
- 10 CONTROLS
- 16 CSMV2 PROMPTER MONITORS
- 18 EMC PROMPTER MONITORS
- 20 PTZ PROMPTER SYSTEMS
- 24 LIGHTWEIGHT FIELD PROMPTERS
- 26 TALENT MONITORS & TALENT MONITOR MOUNTS
- 28 MOUNTING
- 32 COLLAPSIBLE HOOD
- 33 TRANSPORT CASES
- 34 ACCESSORIES
- 38 SPEECH PROMPTERS

About CueScript

When choosing a prompting company what are the main factors in making your choice? Price, manufacturer, supplier, features, build quality, after sales support? What if a prompting company ticked all of these boxes? What if a new prompting company came to market with a new way of thinking, yet held old school values and consisted of a team that collectively had more experience in the prompting industry than any other. No legacy systems to support, just looking forward from day one... Welcome to CueScript!

CueScript is a prompting company with the personal touch.

With design for purpose, ingenuity and quality at the forefront, the CueScript team have developed a range of exciting products. Understanding the needs of the customer and listening to the end user are sometimes forgotten. We invite free thinking, we want to push boundaries and we have the drive and ability to promptly react to ideas or requests. So whether it be development of bespoke systems, or general progression, we are open to customer needs and requirements. Turning an idea into product is what we thrive on.

For CueScript customer service is paramount.

From initial contact to the installation of the product, every step should be met with the right information and attention to detail. Our goal is to build long term relationships and we will only achieve that by gaining your trust. We want to be the competent, dependable choice. The prompting company you can rely on to respect, listen, advise and deliver.

A new way of thinking.

We want to make a real difference to the user experience. CueScript Teleprompters and CueiT software offer a wealth of features for today's multipurpose productions. Providing the feature set in one complete system has been fundamental in our approach to the design. CueScript has had the unique advantage of starting from a blank canvas, inspiring fresh ideas derived from industry experience each member of the team has gained within all areas of production.

IP Prompting and CueTalk Cloud

The move to IP is something we have been working on for some time; in fact, CueScript has been delivering the world's first fully IP-ready prompting solution since 2016.

While the IP future is a given, we recognise that not all broadcasters are able to transition their entire workflows instantly or completely. Our systems therefore have an all-in-one approach, allowing our customers to adopt an IP infrastructure today if they are ready, but feature conventional connections such as USB, HD-SDI and Composite video and that many studios still require.

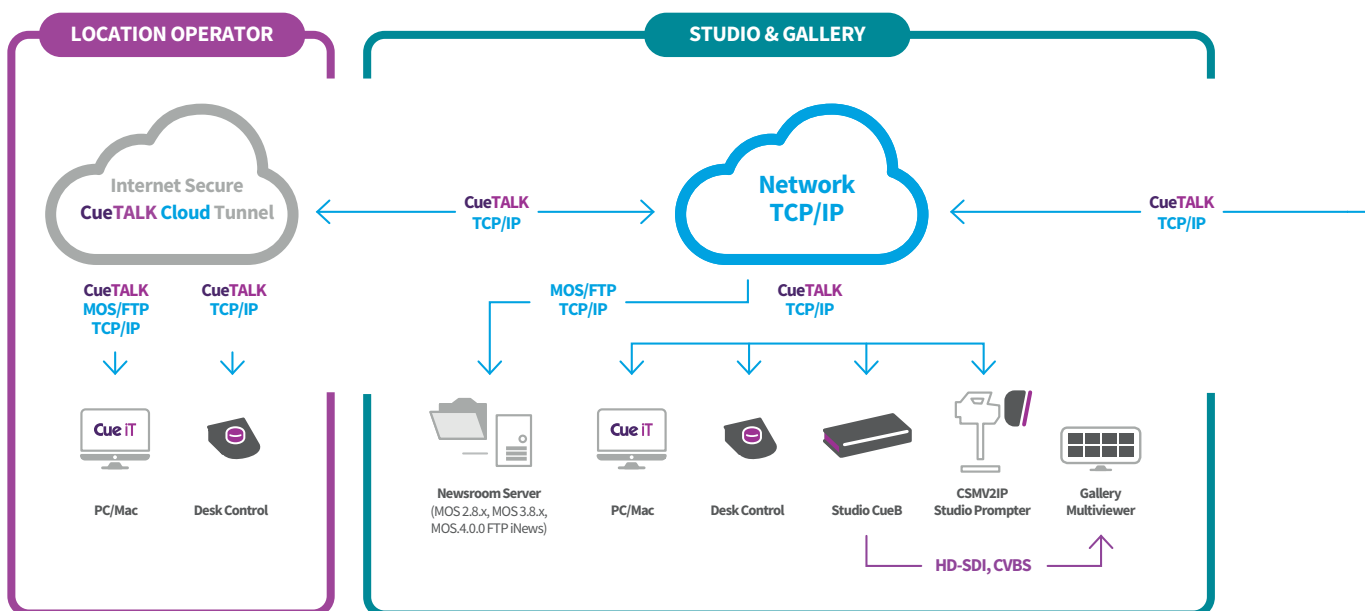
IP is here, but whether you are ready for it now or later, our systems will give you reliable and future-proofed prompting today.

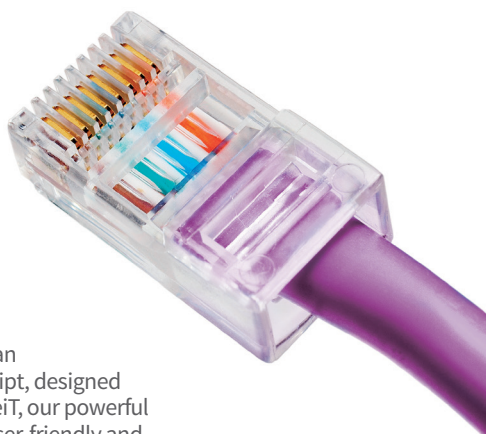
IP-ready CueB & CueB openGear - The main hub of the CueScript IP-ready prompting solution system is the CueB. Multiple CueBs can run independently or simultaneously and can be rack mounted. Connecting via CueTALK® (CAT5/6 Ethernet) and SMPTE 2110 IP within the network infrastructure, or USB, they provide HD-SDI and Analogue signals as standard. An openGear card version of the CueB is also available.

IP-ready Scroll Controls - CueScript offer 5 scrolling devices to control the prompter: CSSC Desktop Control, CSSCM Mini Desktop Control, CSFSC Foot Control, CSSCW Wireless Hand Control and CSFSCW Wireless Foot Control. All connect via Ethernet (PoE), or USB locally to the computer, offering complete plug and play connectivity.

IP-ready Prompt Monitors - The IP option continues throughout our range of CSMV2 high brightness prompter displays, which use metadata to send the text to the prompt monitor. As such, this low data-rate stream is not a real-time audio/video stream, but a render description language. This provides significant advantages as it does not load the IP infrastructure, nor does it require network configuration above conventional business IT connectivity. Along with CueTALK® (CAT5/6 Ethernet) and SMPTE 2110 IP connectivity, the CSMV2 monitors also feature SD/HD/3G-SDI, Composite video and HDMI.

Connecting Prompting Anywhere, Anytime





CueTALK Cloud - CueTALK Cloud is an innovative service offered by CueScript, designed to revolutionize the way you use CueiT, our powerful software application. It provides a user-friendly and seamless setup between local and remote applications, allowing you to access controllers and prompt devices via the cloud using a standard public internet connection.

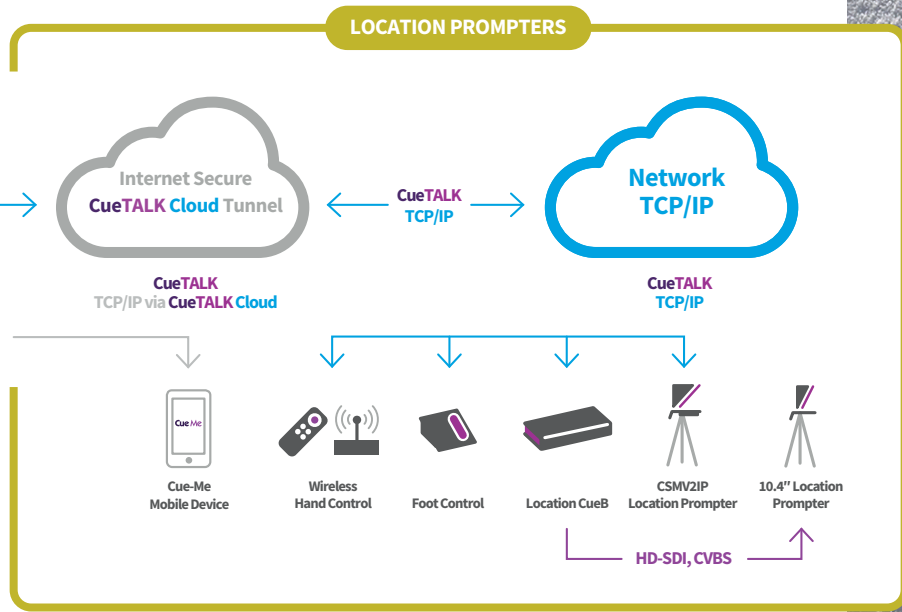
Key Features and Benefits

Prompting Anywhere: With CueTALK Cloud, enjoy accurate teleprompting wherever there’s an internet connection. No more limitations on location or relying solely on local networks or setting up VPN hardware.

Flexibility and Scalability: Our cloud-based prompting product and technology offer greater flexibility and scalability, allowing you to adapt to changing production needs effortlessly.

Real-Time Collaboration: Collaborate with remote production sites in real-time, enhancing productivity and efficiency in media production. Work seamlessly together, regardless of physical distance.

Configuration and management of the IP devices is controlled within the CueiT application. User and access rights can be set in each instance of the CueiT application. A simple drop-down window displays the CueScript IP devices available in the facility or on a location, and there is no limit to the quantity or distance within network infrastructure.



CueiT Software

CueScript CueiT Software

A truly operator and production friendly prompting software has been born! CueiT has been developed with a deep understanding of what it is to be a prompt operator.

Simplicity of visual content, yet intensely packed with necessary and useful features, all of which can be easily viewed and accessed within the one screen – that was the task we gave ourselves and achieved in CueScript style. CueiT has a different structure to that of other prompting software, but upholds a familiar feel with ribbon menus and shortcuts, making it extremely user friendly.

Having had hands on experience, the development team share a vast knowledge from the studio floor to newsrooms and corporate work alike. To suit all types of production there are 3 versions of CueiT to choose from: CueiT Premier, Production and News

The powerhouse of CueiT is the 'CueB' - CueScript's external interface device - creating the world's first complete IP-based prompting solution to support you for today and tomorrow (see pages 8-9).

CueiT Messaging Centre CueiT Timer Clock Interface License

This new function of the user-friendly CueiT prompting software allows messages and timings to be displayed on the prompter.

The messages are displayed on the prompter output as overlay to the scrolling script. Single or multiple messages can be displayed individually or simultaneously. They are fully configurable within the Styles Menu of CueiT, giving operators the ability to define the position on screen, size, font, colours and formatting.

In addition to text messaging, operators can provide time information both in the form of a clock - sourced from a local PC clock or internal/external NTP server - and a timer via the MasterClock RC600 device.

- **Compatible add-on for all CueiT license types.**
- **Includes interface for control via the MasterClock RC600 count device (MasterClock RC600 available for purchase from MasterClock).**



To suit all types of production there are 3 versions of CueiT to choose from:

Cue iT Premier

- Suitable for:** Education, middle market, corporate.
- Output:** Video via a secondary graphic card output either direct from the customer's laptop/PC or via a converter e.g. HDMI/DVI/VGA to SDI/Composite.
- Includes:** CueiT Premier software, license key (dongle) and the CSSC desktop scroll control.
-

Cue iT Production

- Suitable for:** Studio facilities, light entertainment, game shows, sport, live productions and conferences.
- Connections:** USB and Ethernet.
- Output:** Composite video and HD-SDI as standard.
- Includes:** CueiT Production software, CueB and the CSSC desktop scroll control.
-

Cue iT News

- Suitable for:** News, MOS connectivity and all productions using a Newsroom Computer System (NRCS).
- Connections:** USB and Ethernet.
- Output:** Composite video and HD-SDI as standard.
- Includes:** CueiT News software, CueB and the CSSC desktop scroll control.



CueB & openGear CueB

CueB

CueiT Prompting Software Interface Device

The CueB is the hub of the CueScript prompting system, activating the CueiT software, enabling prompt output and control of the prompt output.

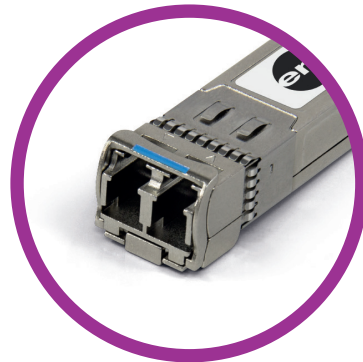
The sleek styled box connects via Ethernet or USB, and features SFP+ SMTPE 2110 for dual video output via an SFP fibre network (license enabled). The CueB has a built in VDA (video distribution amplifier) offering 2 analogue video outputs and 2 HD-SDI outputs as standard.

Multiple CueB devices can run independently or simultaneously, and a rack mount for the CueB device is available.

The CueB is included in the CueiT Production and CueiT News software packages, compatible with Windows as standard, with a Mac add-on license available.

Technical Specification:

- **CueB dimensions:** 37cm x 18cm x 4.3cm
- **Connectivity:** CueTALK via USB or Ethernet, SFP+ SMPTE 2110 (license enabled)
- **Power Input:** 12V XLR
- **Built in VDA offering:** 2 x Analogue/Composite, 2 x HD-SDI outputs
- CueiT license resides on the CueB device.
- Rack mount available.



CSOG - openGear CueB

An openGear compatible card for prompt output interface and software license for CueiT.

The CueScript openGear Card is an alternative to the CueB device that, as the hub of the CueScript IP teleprompting setup, brings new levels of integration to studio builds, advantages in power, connectivity and reduction of physical footprint.

The openGear card is mounted in an openGear frame (frame not sold by CueScript), significantly saving rack unit space. Studios can now deploy up to 10 prompting channels in just 2U of rack space.

Features an Ethernet interface to CueiT, and enables the prompt signal with Composite and HD-SDI video outputs.

Includes the CueScript openGear card and backplate with CueiT Production license. If ordering CueiT News version, the CueiT News upgrade (CSNLU) is required.

Technical Specification:

- OpenGear Card Architecture; 1 slot width
- Connections included are: 1 x Analogue/Composite, 2 x HD-SDI, 1 x Ethernet
- Powers via OpenGear Rack.
- Interfaces to CueiT via Ethernet.
- USB-mini port for configuration.


openGear



Controls

CSSC - Desktop Scroll Control

CueScript's desktop control device adjusts the speed and direction of scrolling text on the prompter, featuring quick command buttons that allow navigation around the script and trigger configurable commands.

Most commonly used by the prompt operator, whose role can be extremely intense and highly pressured, the CSSC was created by focussing on the operator's workflow and the tools they need.

The CSSC control is included with all CueiT software packages. It can connect via USB or Ethernet (PoE), and also directly to the CueScript Foot Control (CSFSC) to be used as a deskpad.

Technical Specification:

- Capacitive encoder for super smooth scrolling.
- 8 Buttons for operator or presenter control: Next Story, Previous Story, Top of Runorder, Blank Screen, Next Marker, Previous Marker and 2 x configurable command buttons.
- Connectivity via USB or Ethernet (PoE).
- 12V XLR input (in case PoE is not available).
- Adjustable scroll sensitivity.
- RJ11 connection to the CueScript CSFSC Foot Control to use as deskpad.
- For use with CueiT Premier, CueiT Production and CueiT News.



CSFSC - Foot Scroll Control

CueScript's foot control device that operates and adjusts the speed and direction of scrolling text on the prompter.

With a stylised and sturdy design, employing the very latest components for durability and reliance, the CSFSC Foot Scroll Control uses a capacitive encoder (CE) to provide super smooth scrolling and reliability. Much like an accelerator pedal, the further the pedal is pushed, the faster the scroll of text. Carefully designed and engineered to provide the optimal balance of sensitivity, resistance and comfort, whether standing or seated.

The CueScript CSFSC Foot Control features an instant reverse button, keeping the pedal as forward scrolling at all times.

Additionally, the CueScript Desktop Scroll Control (CSSC) or Mini Desktop Scroll Control (CSSCM) can connect to the CSFSC to act as a presenter deskpad. Connection is via RJ11, so power is shared, and quick command buttons are easily accessed by the presenter. These allow navigation around the script and trigger configurable commands within CueScript's CueiT software.

Connectivity is via USB or Ethernet (PoE).

Technical Specification:

- Capacitive encoder gives super smooth scrolling and reliability.
- Connectivity via USB or Ethernet (PoE).
- 12V XLR input (in case PoE is not available).
- Reverse only button for immediate reverse action.
- RJ11 connection from the CSFSC to the CueScript Desktop Scroll Control (CSSC) to act as a deskpad, offering 8 buttons for presenter control: Next Story, Previous Story, Top of Runorder, Blank Screen, Next Marker, Previous Marker and 2 x configurable command buttons.
- For use with CueiT Premier, CueiT Production and CueiT News.



Wireless Controls

CSSCW – Wireless Hand Scroll Control

CueScript's wireless hand control is a hand-held device designed to be used by the presenter/speaker to adjust the speed and direction of scrolling text on the prompter.

The CSSCW wireless hand control features a slider which provides easy adjustment of speed and direction of scroll, increased control and a comfortable, ergonomic feel.

Quick command buttons are at the presenters'/speakers' fingertips for fast navigation around the script and the ability to trigger configurable commands.

Due to the CSSCW control being wireless and hand-held it allows for freedom of movement whilst maintaining control of the prompt.

As with all CueScript scroll controls, the CSSCW receiver unit features USB and Ethernet (PoE) connectivity.

Technical Specification:

- Frequency: 915MHz (US model) and 868MHz (ROW) as standard. 433MHz available on request.
- Distance: Up to 300m for 868MHz and 100m for 915MHz from transmitter (Wireless Hand unit) to the receiver (Receiver unit).
- The protocol allows multiple transmitter/receiver combinations to occupy the same frequency without interfering with each other.
- Receiver unit connects via IP (PoE) and USB.
- Wireless Hand unit features a slider for forward and reverse scrolling and buttons for Next Story, Previous Story, Top of Runorder and Blank Screen.



CSFSCW – Wireless Foot Scroll Control

CueScript's wireless foot control device that operates and adjusts the speed and direction of scrolling text on the prompter.

This wireless version of the CueScript foot control allows for freedom of prompting location. Like an accelerator pedal, the further the pedal is pushed, the faster the scroll of text.

With a stylised and sturdy design, employing the very latest components for durability and reliance to give finite control and super smooth scrolling, the CueScript foot pedal has been carefully designed and engineered to provide the optimal balance of sensitivity, resistance and comfort, whether standing or seated.

As with all CueScript scroll controls, the CSSCW receiver unit features USB and Ethernet (PoE) connectivity.

Technical Specification:

- Frequency: 915MHz (US model) and 868MHz (ROW).
- Distance: Up to 300m for 868MHz and 100m for 915MHz from transmitter (Wireless Foot pedal) to the receiver (Receiver unit).
- The protocol allows multiple transmitter/receiver combinations to occupy the same frequency without interfering with each other.
- Receiver unit connects via IP (PoE) and USB
- Foot pedal features a reverse button which provides immediate reverse action, instead of a switch.
- Option for a secure, tidy mount for a camera battery to allow for extra-long wireless usage.
- Foot Control goes into a battery reserve mode when not in use.



SayiT

Streamline Your Teleprompter Experience

SayiT is a cutting-edge prompting software application designed to enhance your teleprompter experience. With SayiT, you can effortlessly have your script automatically scroll in perfect synchronization with your speech, eliminating the need for manual scrolling and ensuring a seamless presentation.

Streamlined Operator Workflow

SayiT revolutionizes operator workflow by eliminating the task of manually scrolling the prompter script. Operators can focus on other essential aspects of production, knowing that SayiT will handle the script scrolling automatically. This saves time, reduces errors, and enhances the overall efficiency of your teleprompter operation.

Key Features and Benefits

- **Automatic script scrolling synchronized with speech**
- **Streamlined operator workflow**
- **User-friendly interface for easy navigation**
- **Pause, Start and Stop with a click of a button**
- **Compatibility with all CueScript teleprompter hardware**
- **Reliable and stable performance for uninterrupted presentations**

SayiT is recognized as a controller, which can simultaneously be used with all existing desk, hand and foot controllers on the system, and seamlessly integrates into your CueiT workflow. SayiT will auto-scroll through non-speaking parts, including sluglines, production cues, and SOTs if broadcasters want to caption them.

Should the presenter miss words or skip ahead, the system is intuitive enough to catch up, and if they need to go off-script or have a discussion off-air, the presenter or a member of the production team can press an assigned 'mute/pause/cough' button on a CueScript controller to disable and re-enable SayiT at any time.

Technical Specification:

- Compatible add-on for all CueiT license types
- Requires CueScript CueiT software version 3.3.0 or higher
- Audio Input type: WDM - Audio Interface
- Audio spec: Input PCM 16bit 44.1kHz for talent voice feed

As with all CueScript products you will always get exceptional and reliable customer support from CueScript's dedicated team of professionals. We're here to assist you every step of the way.



CSMV2 Prompter Monitors

The CueScript SMPTE 2110 IP System

The CSMV2 is the industry's first native SMPTE 2110-enabled prompting monitor. This patented innovation from CueScript revolutionises the way prompting can be used and future-proofs your purchase.

As per our ethos, conventional connectivity remains as standard for total flexibility; SMPTE 2110 IP, CueTALK® (CAT5/6 Ethernet), SD/HD/3G-SDI, Composite video, HDMI, all native, so converters are not required.

If you're looking at all-SMPTE IP installations you no longer have to rely on SDI-SMPTE gateway converters, thus allowing the CSMV2 a seamless interconnection with 10GigaBit fibre IP switches. This allows both the prompt and talent monitor to be fed from a single 10GB fibre cable, even when the talent monitor is an existing SDI-only display. CSMV2 'decapsulates' the 2110 on-air/talent feed sent as a second IP stream on the cable, and outputs it as a traditional SDI video signal.

For customers that want IP flexibility but do not have a 10GB IP-based video switch, the CSMV2 also includes CueScript's innovative IP connectivity now referred to as CueTALK, which provides seamless operation through standard CAT5/6 IT infrastructure.

The sleek, low-profile design not only looks good, but is robust and durable. Built in LED cue lights have adjustable brightness and a wrap-around design, offering 180° viewing. Low energy consumption means that fans are not required, so there are no moving parts.

The CSMV2 prompters are incredibly swift to setup with integrated mounting and the CueScript CueLock feature; a spinlock mechanism in which all parts are captive.

Presenters will notice a difference with CueScript's range of prompters due to the high-resolution LED screens, high contrast ratio and super smooth scrolling from CueScript's CueiT software.

- **IP connectivity choice: SMPTE 2110 IP and CueTALK (CAT5/6 IP)**
- **IP input is small data packets only, no video transmission**
- **Native connections result in a more robust and efficient setup**
- **Conventional video connections included as standard**



CSMV217

Technical Specifications

Screen Size	17" diagonal
Brightness	1500 cd/m ²
Contrast Ratio	1000:1
Native Resolution	1280 x 1024 (SXGA)
Viewing Angle	170°(H), 160°(V)
Backlight Technology	High Brightness LED with backlight
Backlight saver	User selectable timing
Reverse/Rotation	4-way picture orientation
Controls	Power Saver Mode Illuminated LED pushbuttons with adjustable brightness

Dimensions

Front to Back	13.33" (338mm)
Right to Left	15.125" (384mm)
Depth	2.5" (64mm)
Monitor weight	9lb 3oz /4.17kg

Video

2 x SD/HD/3G-SDI (SMPTE 259M-C, SMPTE 292M and SMPTE424M standards)
CueTALK® (Ethernet)
HDMI 1.4a
Composite PAL/NTSC/SECAM
SFP+ (Supported standard ST2110) – Optional
Timecode: LTC/MITC/DVITC

Power Inputs & Connectors

IEC AC 100-240 V 50-60 HZ 40VA
XLR 4 Pin DC 3.6A @ 12V nominal (44W)
Additional Connectors
2 x USB A Multipurpose
1 x USB B Multipurpose
1 x Mini USB Tally Sensor
1 x XLR 4 Pin 12VDC Out (48W Max)
1 x Mini XLR LTC Timecode

Certifications

CE, TUV, FCC, C-Tick, PSE, RoHS

*All specifications are subject to change

CSMV219

Technical Specifications

Screen Size	19" diagonal
Brightness	1500 cd/m ²
Contrast Ratio	1000:1
Native Resolution	1280 x 1024 (SXGA)
Viewing Angle	170°(H), 160°(V)
Backlight Technology	High Brightness LED with backlight
Backlight saver	User selectable timing
Reverse/Rotation	4-way picture orientation
Controls	Power Saver Mode Illuminated LED pushbuttons with adjustable brightness

Dimensions

Front to Back	14.5" (368mm)
Right to Left	16.5" (419mm)
Depth	2.5" (64mm)
Monitor weight	10lb 12oz /4.89kg

Video

2 x SD/HD/3G-SDI (SMPTE 259M-C, SMPTE 292M and SMPTE424M standards)
CueTALK® (Ethernet)
HDMI 1.4a
Composite PAL/NTSC/SECAM
SFP+ (Supported standard ST2110) – Optional
Timecode: LTC/MITC/DVITC

Power Inputs & Connectors

IEC AC 100-240 V 50-60 HZ 40VA
XLR 4 Pin DC 3.6A @ 12V nominal (44W)

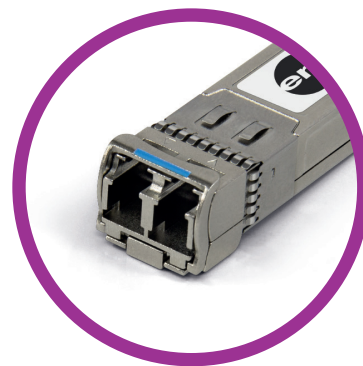
Additional Connectors

2 x USB A Multipurpose
1 x USB B Multipurpose
1 x Mini USB Tally Sensor
1 x XLR 4 Pin 12VDC Out (48W Max)
1 x Mini XLR LTC Timecode

Certifications

CE, TUV, FCC, C-Tick, PSE, RoHS

*All specifications are subject to change



EMC Prompter Monitors

The EMC monitors are a simplified version of our high end CSM monitor range, suitable for educational, middle markets & corporate use.

With the same CueScript principles of style, quality and ease of use, the EMC range of monitors are sleek, lightweight and extremely easy to set up, courtesy of the built in CueLock feature. Offering excellent image and scroll quality, the EMC monitor is the only middle market prompter with the level of features and quality needed for a mission critical product.



EMC15

Technical Specifications

Screen Size	15" diagonal
Brightness	400 cd/m ²
Contrast Ratio	700:1
Native Resolution	1024 x 768 (XGA)
Viewing Angle	160°(H), 140°(V)
Backlight Technology	LED
Controls	Illuminated LED push-buttons with adjustable brightness

Dimensions

Front to Back	11.86" (301mm)
Right to Left	14.24" (362mm)
Depth	1.8" (46mm)
Monitor only weight	5.2lbs/2.4kg
Complete weight with Large Hood, Glass & Mount Purple	18.2lbs/8.3kg

Video

Autosensing	PAL/NTSC/VGA/HDMI Composite 75 Ohms
-------------	--

Power Inputs & Connectors

DC Power Input	1.3 A / 15.6 Watts
DC Power Connector	2.5mm x 5.5mm Center Positive

Additional Connectors

USB – DC Out	USB-A 5V
--------------	----------

Certifications

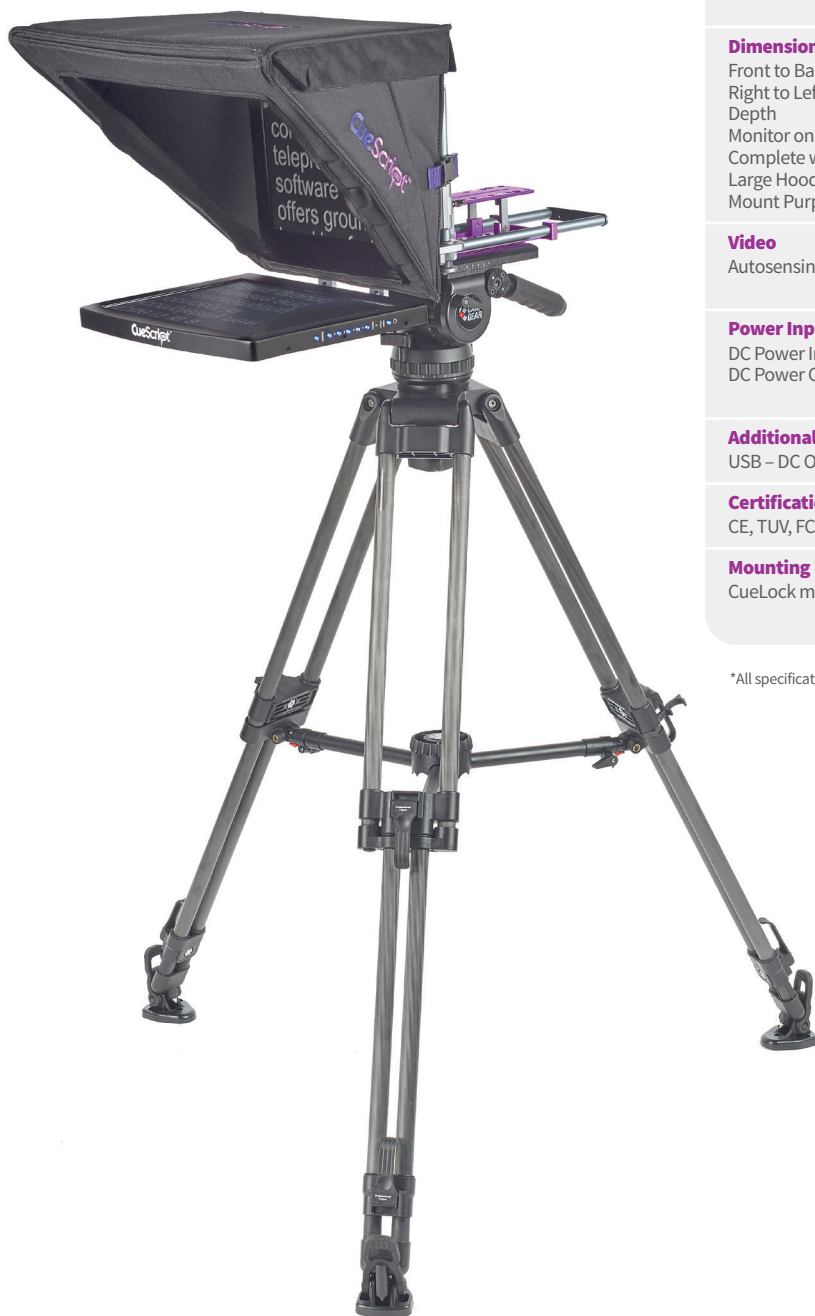
CE, TUV, FCC, C-Tick, PSE, RoHS

Mounting

CueLock mounting system built in for fast, secure setup and release.

*All specifications are subject to change





EMC17

Technical Specifications

Screen Size	17" diagonal
Brightness	350 cd/m ²
Contrast Ratio	800:1
Native Resolution	1280 x 1024 (SXGA)
Viewing Angle	170°(H), 160°(V)
Backlight Technology	LED
Controls	Illuminated LED push-buttons with adjustable brightness

Dimensions

Front to Back	13.82" (351mm)
Right to Left	15.5" (394mm)
Depth	1.8" (46mm)
Monitor only weight	6.8 lbs / 3.1kg
Complete weight with Large Hood, Glass & Mount Purple	19.8 lbs / 9kg

Video

Autosensing	PAL/NTSC/VGA/HDMI Composite 75 Ohms
-------------	--

Power Inputs & Connectors

DC Power Input	1.9 A / 22.8 Watts
DC Power Connector	2.5mm x 5.5mm Center Positive

Additional Connectors

USB - DC Out	USB-A 5V
--------------	----------

Certifications

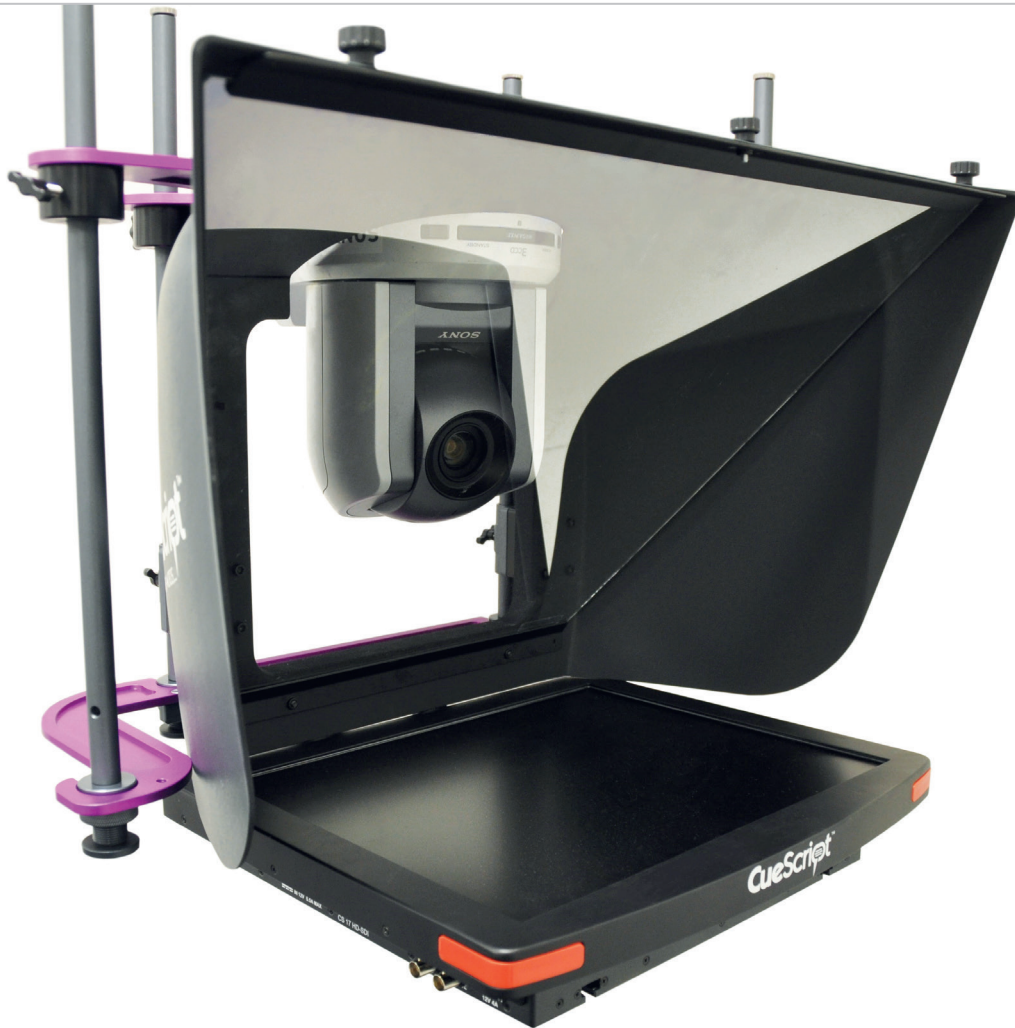
CE, TUV, FCC, C-Tick, PSE, RoHs

Mounting

CueLock mounting system built in for fast, secure setup and release.

*All specifications are subject to change

PTZ Prompter Systems



Until now using a prompter display with a PTZ camera restricted the operation of the PTZ, as these cameras are not designed to work with prompting units.

CueScript has set about to turn this problem on its head... literally!

With a patent pending, CueScript has developed a unique mounting system whereby the PTZ camera mounts upside down in the top of a specially designed prompter hood.

Mounting the system in this way removes the operational limitations of a PTZ camera within a prompter; the PTZ has greater movement in the shots it can achieve.

An additional bonus is that using a prompter with a PTZ camera no longer requires high payload taking, expensive tripods, as the CueScript PTZ Mount makes using a lighting stand possible.

- **Unique patent pending mounting system increases the operational movement of a PTZ camera within a prompter.**
- **Available with a choice of 15", 17" or 19" CueScript monitors.**
- **Wall-mount version also available.**



Included in the CueScript PTZ Prompter System

CueScript PTZ Mount for tripod and lighting stand (CSMP TZ)

CueScript PTZ Hood (CSHPTZ)

CueScript Monitor (EMC15/ EMC17/ CSM17/ CSM19/ CSMV217 CSMV219)
A wall-mount version is also available.

PTZ Prompter System part numbers and weights

(PTZ camera not included)

EMCP15PTZ
15" EMC PTZ Prompter System
9.6kg / 21.1lbs

EMCP17PTZ
17" EMC PTZ Prompter System
10.2kg / 22.5lbs

CSV2P17PTZ
17" CSMV2 PTZ Prompter System
12kg / 26.3lbs

CSV2P19PTZ
19" CSMV2 PTZ Prompter System
12.4kg / 27.3lbs



FR7 PTZ Prompter Systems



The Sony FR7 PTZ camera is unique from other PTZ cameras in that it features a full-frame cinema sensor and interchangeable lenses, so CueScript has created a unique prompter solution specifically for this.

The custom designed FR7 CueScript prompter ensures that the camera is in the ideal position for capture, giving customers access to the interchangeable lens and providing a reliable, high-quality teleprompter, without the need for any counterbalance.

Available in 4 different models, the CueScript FR7 PTZ prompting solution is comprised of the hood, mount, and monitor, to suit customer specification preference.

Much like the original CueScript PTZ Prompter System, counterbalance weight is not required. An additional bonus to using the CueScript PTZ prompter is that high payload taking, more expensive tripods are not needed, as the CueScript PTZ Mount makes using a lighting stand possible.

Whether for studio, conference, boardroom, or outdoor use, presenters will appreciate CueScript's prompters for their high-resolution LED screens, high contrast ratio and super smooth scrolling enabled by the CueiT software.

Model packages include:

CSV2P19FR7 - 19-inch CSMV2 On-Camera Prompter System

CSV2P17FR7 - 17-inch CSMV2 On-Camera Prompter System

EMCP17FR7 - 17-inch EMC On-Camera Prompter System

EMCP15FR7 - 15-inch EMC On-Camera Prompter System



Lightweight Field Prompters

CSF10SDI & CSF15

The CSF prompters are adaptable to all field camera set-ups, and with their super high brightness LED screens they are perfect for outside broadcasts (OB's), jibs and cranes.

The CueScript CSF10SDI and CSF15 are high-quality prompting monitors which use 1500 nit edge-lit LED screens to produce an ultra-high bright and clear image, delivering superb picture quality.

They feature CueScript's CueLock mounting system that allows for a secure and easy set-up, without the need for tools.

The internal tilt sensor controls the picture auto-flip and the smart cue lights on the front and top of the monitor, to automatically adjust to the monitor's orientation. Whether using the CSF10SDI or CSF15 with a Teleprompter Hood, or vertically as a direct view (particularly useful for jibs), the correct cue light and orientation will be activated by a motion sensor.

Each part of the CSF packages has been carefully designed to create the best professional lightweight prompter system on the market. Due to the compact size, we opted for a square prompter glass panel to maximise the wide-angle camera shots achievable. However, with the incorporated direct view mount, if the hood isn't clearing the widest shot required, you can swiftly and very simply remove the hood and convert to a direct view set-up above the lens.



CSF10SDI

Technical Specifications

Screen Size	10.4" diagonal
Brightness	1500 cd/m ²
Contrast Ratio	3000:1
Native Resolution	1024(H) x 768(V)
Viewing Angle	180°(H), 180°(V)
Backlight Technology	High Brightness LED
Reverse/Rotation	4-way picture orientation Tilt switch activator - automatically switches when unit is vertical or horizontal

Dimensions

Front to Back	8.2" (208.3mm)
Right to Left	10.35" (262.9mm)
Depth	1.85" (47mm)
Monitor only weight	2.6lbs/1.2kg
Complete CSP10S prompter weight	10.3lbs/4.7kg

Video

Autosensing	PAL/NTSC/VGA/DVI/HDMI/HD/HD-SDI Composite 75 Ohms
-------------	--

Power Inputs & Connectors

Barrel connector 2.5mm ID/5.5mm OD

Power Consumption

1.2A @12V DC, 14.4 Watts

Additional Connectors

DC Out:	USB 5V
Tally Sensor:	Mini USB - with cue light sensitivity control

Certifications

CE, FCC, C-Tick, PSE, RoHS

Mounting

CueLock mounting system built in for fast, secure setup and release.

*All specifications are subject to change

CSF15

Technical Specifications

Screen Size	15" diagonal
Brightness	1500 cd/m ²
Contrast Ratio	5000:1
Native Resolution	1024 x 768 (XGA)
Viewing Angle	176° (H), 176° (V)
Backlight Technology	High Brightness LED
Reverse/Rotation	4-way picture orientation Tilt switch activator - automatically switches when unit is vertical or horizontal

Dimensions

Front to Back	12" (305mm)
Right to Left	13.97" (355mm)
Depth	1.65" (42mm)
Monitor only weight	5.5lbs/2.5kg

Video

Autosensing	PAL/NTSC/VGA/DVI/HDMI/SDI/HD-SDI Composite 75 Ohms
-------------	---

Power Inputs & Connectors

XLR 4pin 12V DC

Power Consumption

2.4A @12V DC, 28.8 Watts

Additional Connectors

DC Out:	USB 5V
Tally Sensor:	Mini USB - with cue light sensitivity control

Certifications

CE, TUV, FCC, C-Tick, PSE, RoHS

Mounting

CueLock mounting system built in for fast, secure setup and release. Add CSF15MPLA Adapter to attach to larger CueScript mounts & hoods.

*All specifications are subject to change



Talent Monitors & Talent Monitor Mounts

In recent years the introduction of talent monitors hung under the prompter has become increasingly popular, tidying up the studio floor and preventing the talent having to look off camera.

CueScript Talent Monitors have been built for purpose with a slim and aesthetically pleasing curved design. Available in 22" (CSTM22) and 24" (CSTM24). Power to the CSTM22 can be taken from CueScript's CSM range of prompters and integrated mounting rails allow for smooth, quick setup.

Each Talent Monitor has a corresponding mount. These Talent Monitor Mounts are super lightweight but incredibly strong, providing secure fixing for the CueScript Talent Monitors. The mount slides into the in-built rails of the CSM monitors with ease and 3 axis movement allows for full adjustability. Standard VESA mount incorporated.

CSTM22

Technical Specifications

Screen Size	21.5" diagonal
Display Area	476mm(H) x 268mm(V)
Brightness	1500 cd/m2
Contrast Ratio	1000:1
Native Resolution	1920 x 1080 (WUXGA)
Viewing Angle	178°(H), 178°(V)
Backlight Technology	LED

Dimensions

Height	13.62" (346mm)
Width	20.85" (530mm)
Depth	1.9" (48mm)
Weight	8.2lbs/3.72kg

Video

Autosensing	PAL/NTSC/HD-SDI/SD-SDI/VGA/DVI/HD Component Composite 75 Ohms
-------------	--

Power Inputs & Connectors

XLR 4pin 12V DC

Certifications

CE, TUV, FCC, C-Tick, PSE, RoHS

Mounting

Slides into the CueScript CSM or CSMV2 monitor range via integrated rails using the CSTMM Talent Monitor Mount.
Can attach to the CueScript EMC Monitor range with a modification.

*All specifications are subject to change



CSTMM – Mount for CSTM22



CSTM24

Technical Specifications

Screen Size	24.1" diagonal
Display Area	518.4mm(H) x 324mm(V)
Brightness	1200 cd/m ²
Contrast Ratio	1000:1
Native Resolution	1920 x 1200 (WXGA)
Viewing Angle	178°(H), 178°(V)
Backlight Technology	LED

Dimensions

Height	16" (406mm)
Width	23" (584mm)
Depth	2.2" (56mm)
Weight	10lbs/4.53kg

Video

Autosensing	PAL/NTSC/VGA/HD/HD-SDI Composite 75 Ohms
-------------	---

Power Inputs & Connectors

AC mains with internal power supply

Certifications

CE, TUV, FCC, C-Tick, PSE, RoHS

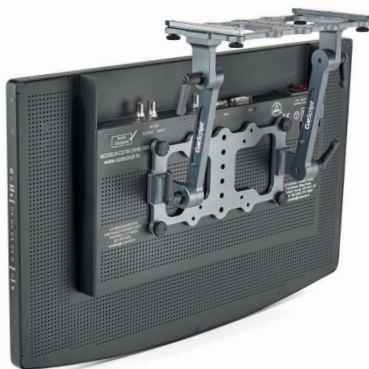
Mounting

Slides into the CueScript CSM or CSMV2 monitor range via integrated rails using the CSTMML mount.

*All specifications are subject to change



CSTMML – Mount for CSTM24



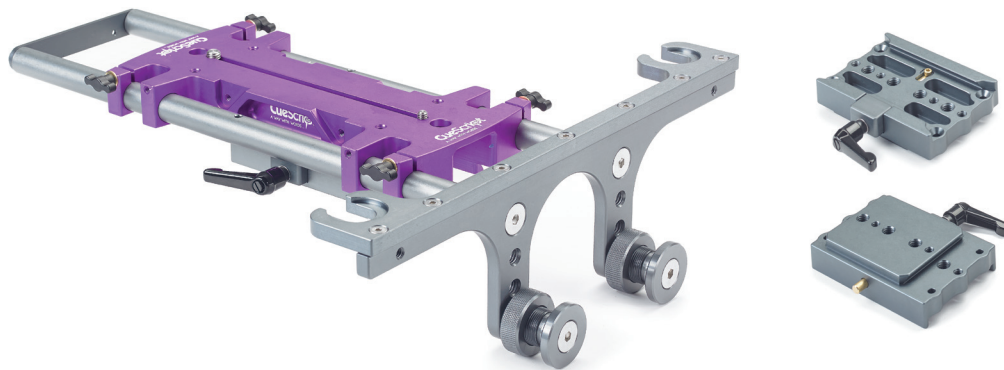
Mounting

CSMPL – Large Mount Purple plate

The CueScript Mount Purple has been designed with ease of use in mind, allowing seamless setup and balance without the use of tools.

A quick release camera plate forming is machined into the Mount Purple so fiddly screws are a thing of the past! The mounting plate acts as an additional heat sink to help dissipate the heat generated by the monitor, aiding the monitor longevity. If required a matching riser plate can be attached to the Mount Purple.

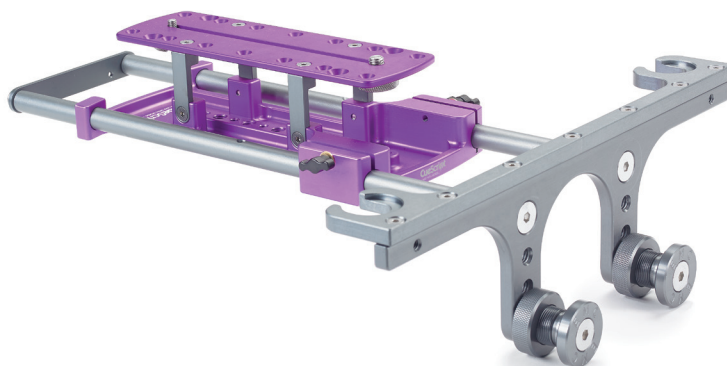
- **CueLock feature for easy, fast and secure mounting.**
- **Fully adjustable for all fluid heads.**
- **Compatible with Medium and Large Hoods (CSHM and CSHL), and Collapsible Hoods (CSHCM and CSHCL), which are all easily interchangeable.**



CSMPM – Medium (EMC) Mount Purple plate

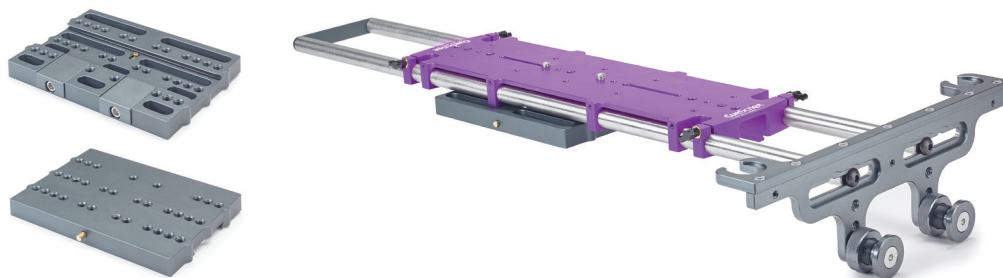
Compatible with CueScript EMC Monitors only.

Suitable for lightweight setups and has a fixed height riser plate attached.



CSMPXL – Extra-large Mount Purple plate

For full size studio cameras with large super box lenses.



Mount Purple Riser Plates – 3 options of camera riser plate heights for CSMPXL Small (3") - CSMPRS, Medium (4") - CSMPRM, Large (6") - CSMPRL



Telescopic Mounting Rods – 7" - CSTRM & 12" - CSTRL T-Rods for use with large studio heads



Mounting

CSRHS & CSRHSXL – Robotic Hood Supports

Support arms for use with robotic heads.

Lightweight but robust support arm to help further secure the prompter on a robotic head. The Robotic Hood Support comes in two sizes to accommodate all camera and lens setups. They simply attach to the Mount Purple (CSMPL and CSMPXL) plate and the hood rod, and can be adjusted to achieve optimum rigidity.



CSRA – Roll Around Stand

Wheeled stand that allows use of a full size prompter without mounting to tripod and camera.

The CSRA stand enables small, lightweight rigs or locked off shots to still have the use of a prompter. A prompt monitor and hood can be mounted directly to the CSRA stand, courtesy of a bespoke stand mount. Wheels on the steel legs enable you to roll the prompter in and out of position in front of the camera. The wheels can also be tucked away to create a static stand if required and height can easily be adjusted.

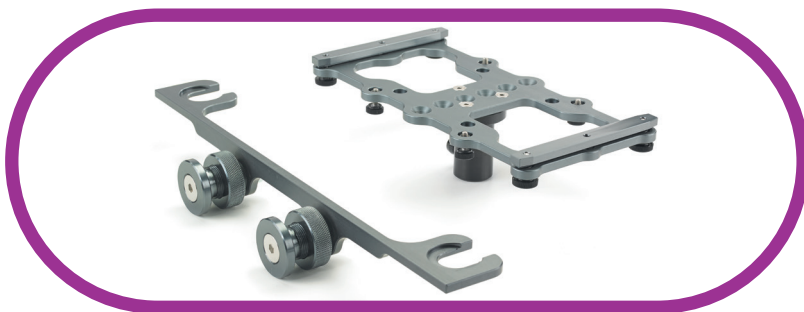
- **Great for small rigs with lightweight heads and low payload tripods.**
- **Perfect for locked off shots.**
- **Fold away wheels allow for easy movability and positioning, as well as a static stand option.**



CSRA with EMC17 monitor



CSRA with CSM19 monitor



CSRAMT – Stand Mount
For mounting a CSM prompter onto a stand

Collapsible Hood

The CueScript Collapsible Hoods are perfect for portable use.

The Collapsible Hoods are super simple to rig and can easily be transported with the glass in place. Available in small, medium and large sizes.

- **CSHCS - Small Collapsible Hood**
Perfect for jibs/cranes and small, lightweight setups. Use with CueScript Small Glass.
- **CSHCM - Medium Collapsible Hood**
Lightweight and portable full size prompter hood. Use with CueScript Medium Glass.
- **CSHCL - Large Collapsible Hood**
Portable large prompter hood for wide angle and box lenses. Use with CueScript Large Glass.



Transport Cases

CSFILDLM

Bespoke hard shell wheeled flight case for the medium and large collapsible hood prompter systems. Suitable for 15-19" prompting monitors.



CS10BAG

Bespoke padded shoulder bag for small collapsible hood prompter systems. Suitable for 10-15" CSF monitors.



Accessories

CSCN – CueScript CueNumber

Double digit alphanumeric tally cue light.

The CueScript CueNumber tally system is powered by mini USB and designed to plug directly into the USB output connector on the CueScript monitors. The green numbers and/or letters will change to red when the tally signal is received. LED brightness is adjustable.



CSTD – CueScript Time Display

Digital time code display with tally feature.

The CueScript Time Display has a 12 or 24 hour mode selection and doubles as a cue light, taking the camera tally signal via CueScript's photoelectric cell sensor or the wired camera tally. This changes the numbers from green to red when live/on air. It reads and displays VITC SMPTE time code both NTSC and EBU, and clock time can be externally set for when no VITC available. The CSTD Time Display mounts easily and directly to the CueScript CSMV2 prompter range.

- **VTC input and backup time kept with a 32kHz watch crystal.**
- **Power and VTC via mini USB direct from the CueScript monitor.**
- **Simple mounting to CueScript CSMV2 Monitors.**



CueScript - OnTime – Wi-Fi-enabled NTP reader

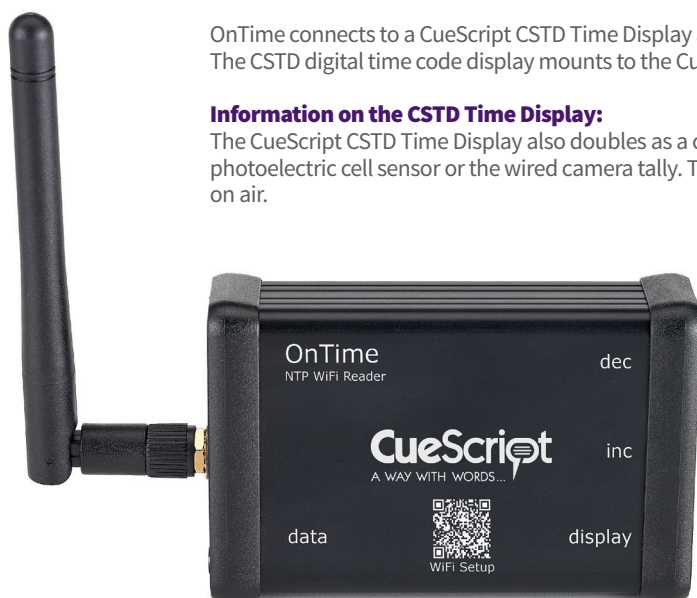
OnTime is a Wi-Fi-enabled NTP reader that can be easily configured to the local time, for accurate timing on the road, providing NTP to the CSTD digital time code display.

- **Power and tally are provided via the USB port on the CSMV2 (and CSM) monitor.**
- **Simple setup by scanning a provided QR code to select Wi-Fi settings.**
- **The OnTime device is small and extremely lightweight.**

OnTime connects to a CueScript CSTD Time Display and CSMV2 (or previous CSM) prompt monitor. The CSTD digital time code display mounts to the CueScript CSMV2 (and CSM) prompter range.

Information on the CSTD Time Display:

The CueScript CSTD Time Display also doubles as a cue light, taking the camera tally signal via CueScript's photoelectric cell sensor or the wired camera tally. This changes the numbers from green to red when live/on air.



One OnTime unit is required per CSTD Time Display.

There are 4 ways to supply timecode to the CSTD display from CSMV2 Monitors:

- 01. LTC Timecode** – Supply LTC timecode signal to the mini XLR connector on the monitor.
- 02. VITC Timecode** – Supply VITC timecode via Composite input on the monitor, along with video signal.
- 03. D-VITC Timecode** - Supply D-VITC timecode via SDI Prompt IN input on the monitor, along with video signal.
- 04. OnTime Device** - Supplies NTP timecode via USB, using Wi-Fi for accurate timing on the road



Accessories

CSBW4 & CSBW4H – CueScript Counterbalance Weights

Counterbalance weights designed to attach to the rear of the Mount Purple plates.

Adjustment of the weight is simple and configurable by adding or reducing the specially designed weights. Their clever design mean that they can be angled and positioned to increase counterbalance but reduce the amount of physical weight required. There are 4 weights included in each set and they are available in 2 sizes:

- **CSBW4** - Total weight of 13.9lbs/6.3kg
- **CSBW4H** - Total weight of 25lbs/11.3kg



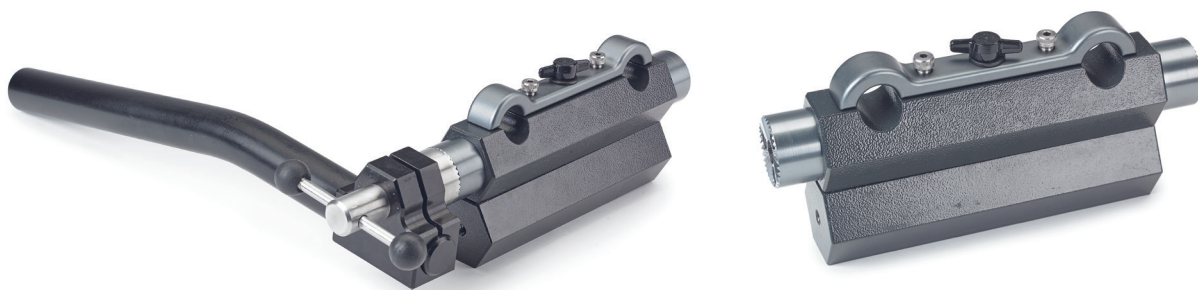
It is suggested that you purchase a set of the 6" extension rods (CSMP6) for the Mount Purple plate when attaching counterbalance weights.



CSRPAW – CueScript Robotic Pan Arm Weight

Counterbalance weight with robotic pan arm receptacle.

- **CSRPAW** - Total weight of 7lbs/3.2kg



Speech Prompters

CSSPS - CueScript Speech Prompter Stand

The manual CueScript Speech Prompter Stand is designed for use by Presenters, Public Speakers and Lecturers. It allows the speaker to address an audience or congregation confidently, factually and provides a reference to their script, without losing viewer engagement.

Clear prompter glass is placed within the glass holder on the telescopic pole and adjusted to a height suitable for the presenter. The glass is then angled so to reflect the monitor attached to the base of the stand, on which the script is scrolled. A surround shield then fits into place around the base to conceal the monitor from the audience. The script image can be seen only by the reader.

The CSSPS Speech Prompter Stand is lightweight and easy to transport, has a range of heights, easily adjusted and has a very smart appearance. The base features the CueScript CueLock mechanism to secure the monitor and the surround shield, and neatly folds away for simple transportation. All CueScript 15"-19" prompt monitors can be used with the CSSPS Speech Prompter Stand.

- **Elegant telescopic stand that is lightweight and easy to transport.**
- **Ideal for award ceremonies, conferences and presentations.**
- **Enhances general presentation and audience interaction.**

Suitable for use with CueScript's Teleprompter monitors from the EMC, CSF15* & CSMV2 range: EMC15, EMC17, CSF15*, CSMV217, CSMV219

**Requires CSF15MPLA Adapter.*



Each CueScript Speech Prompter Stand comes complete with:

- **1 x Adjustable Telescopic Stand**
- **1 x Foldable base with CueLock feature**
- **1 x Surround shield for monitor concealment**
- **1 x Adjustable glass holder**
- **1 x Speech Prompter Glass**

Technical Specification:

- Minimum height: 72.4cm (28.5”).
- Maximum height: 180.4cm (71”).
- Weight of complete Speech Stand (without monitor): 6.2kg (13.8lbs).
- Base Size with Surround attached: W:50.2cm x D:55.9cm x H:32.4cm (W:19.75” x D:22” x H:12.75”).
- Tilt: Manual adjustment.
- Speech Glass size: 25cm x 33cm (9.8” x 13”).
- Attachment of CueScript EMC/CSF15/CSMV2 Monitor via CueLock mechanism. (CSF15 requires CSF15MPLA Adapter.)



Contact us

Please feel free to contact us if you have any questions, need a quote or just to say hello!

US OFFICE:

Tel: +1 (203) 763 4030
Fax: +1 (203) 987 3798
Email: ussales@cuescript.tv

Address:
555 Lordship Blvd,
Stratford, CT 06615, USA

UK OFFICE:

Tel: +44 (0)20 3757 8880
Email: uksales@cuescript.tv

Address:
Unit 15, First Quarter Business Park,
Blenheim Road, Epsom, Surrey
KT19 9QN, UK



www.cuescript.tv