

CueScript

A WAY WITH WORDS...

Complete On-Camera Prompter

Parts, Assembly and Mounting Manual



Model CSP10S Prompter

Contents

1	CueScript CSP10S Prompter Parts (See Appendix 1)	3
1.1	Monitor	3
1.2	Hood	3
1.3	Mounting	3
2	Mini Mount Purple (See Appendix 2)	3
2.1	Unpacking	3
2.2	Set Up	3
2.3	Optional Mounting	4
2.4	Riser (Optional Accessory)	4
3	On-camera setup: Monitor and Hood (See Appendix 3)	4
3.1	Monitor:	4
3.2	Collapsible Small Hood (See Appendix 3 & 4)	4
3.3	Final Adjustment:	5
4	Straight read setup: Monitor (See Appendix 5)	5
4.1	Monitor:	5
5	Balancing	5
	Appendix 1	6
	Appendix 2	7
	Appendix 2 (cont.)	8
	Appendix 2 (cont.)	9
	Appendix 2 (cont.)	10
	Appendix 3	11
	Appendix 3 (cont.)	12
	Appendix 3 (cont.)	13
	Appendix 3 (cont.)	14
	Appendix 4	15
	Notes:	16

1 CueScript CSP10S Prompter Parts (See Appendix 1)

1.1 Monitor

- CSF10 - 10.4" CSF Prompter Monitor

Monitor include the following:

- 12V DC Power supply DC 12V 1.2A
- Cue Light Sensor (**CSCLS**)

1.2 Hood

- Collapsible Small Hood (**CSHCS**)
- Glass for Collapsible Small Hood (**CSGS**)
- Side Flags

1.3 Mounting

- Small Mount Purple (**CSMPS**)

2 Mini Mount Purple (See Appendix 2)

2.1 Unpacking

(Fig 1)

1. With the Philips Head screw driver, attach the monitor mount to the CSM10 using the 4 philps head screws provided.
2. Install the two bosses using a Philips head screwdriver - Make sure both bosses on the mount are facing the back of the CSM10.
3. Insert the two 3/8" hex head mounting screws into Monitor Receptacle so they attach onto the front of the Small mount purple rods.
4. Tighten screws, so that both are flush and there is no movement between the Small Mount Purple and Receptacle bar.
5. Insert threaded portion of the two vertical hood rods into the top of the receptacle bar.

2.2 Set Up

(Fig 2)

1. Attach the Small Mount Purple (CSMPS) to the Jib/Robotic cradle, or tripod wedge plate using 3/8" or 1/4 20" camera screws.
2. Remove the Cuescript wedge plate from the Quick Release shoe, by loosening the Kip lever located on the right hand side of the Quick Release plate, and holing the brass safety button on the opposite side.
3. Once the plate has been removed, attach it to the camera using the 1/4 20" and 3/8th-16 screws provided.
4. Slide the Cuescript wedge plate into Small mount purple, making sure to press the brass safety button to allow attachment.
5. Tighten the Kip lever.

*** Make sure the support head is locked before mounting the remaining hardware.**

2.3 Optional Mounting

The receptacle bar can be mounted in two directions to offer a low and high monitor position for optimal viewing.

- Low: The receptacles below the 3/8 hex mounting bolts

Note: The low mount is typically used with ENG style cameras

- High: The receptacles above the 3/8 hex mounting bolts

Note: The high mount is typically used with small cameras (box, Handycam, or DSLR cameras) that use the CSM10RS (3" Riser).

2.4 Riser (Optional Accessory)

1. Remove the CueScript Camera Plate. This can be done by loosening the kip lever, and holding the brass release lock button until the plate slides out.
2. Remove the 4 hex head screws, that hold the quick release shoe onto the Mount Purple Small.
3. Screw the four 3" stilts into the Mount Purple small until they are tight.
4. Mount the Quick Release shoe onto the four 3" stilts using the four hex head screws.
5. Insert Cuescript Camera plate into the quick release show. If the plate does not move freely, check the 4 stilts to make sure they are even.

3 On-camera setup: Monitor and Hood (See Appendix 3)

3.1 Monitor:

1. Loosen the locking T-knobs on both sides on the Mont Purple Small.
2. Slide the receptacle bar and 15mm rods forward.
3. Tighten the locking T-Knobs.
4. Loosen the monitor bosses, located on the bottom of the monitor.
5. Slide the monitor into the receptacle bar, then tighten bosses.

3.2 Collapsible Small Hood (See Appendix 3 & 4)

1. Remove the two captive screws, located on top of the vertical hood rods.
2. Loosen hood rod clamping knobs.
3. Drop hood onto vertical hood rods.
4. Tighten hood clamping knobs into place.
5. Unbuckle hood strap, wrap around vertical rods, and re-buckle.
6. Tighten until hood is at a 45-degree angle.
7. Drop straight read monitor bar onto vertical rods.
8. Tighten clamping knobs on straight read monitor bar.
9. Insert the two captive screws into the top of vertical hood rods.
10. Remove side flags from hood top pocket.
11. Flip the top over and Velcro secure.
12. Open the glass opening at top and slide glass into place.
13. Attach light shielding flaps on both side of the hood.

Please note for optimal use with our travel cases, glass should not have to be removed each time, and can travel in a folded hood.

3.3 Final Adjustment:

1. Loosen Small Mount Purple Locking T-Knobs.
2. Slide hood and monitor assembly back into position over camera lens, making sure to center lens in hood resting just behind glass. *** For best results remove lens hood from the barrel of the lens***
3. Position lens shroud around camera lens to block all outside light from inside hood.

4 Straight read setup: Monitor (See Appendix 5)

4.1 Monitor:

1. Loosen clamping knobs on straight read monitor bar.
2. Adjust straight read monitor bar (screws facing the rear of the Small Mount Purple) bar to be just above camera lens.
3. Tighten clamping knobs on straight read monitor bar.
4. Loosen the monitor locating bosses.
5. Slide the monitor into the straight read receptacles then tighten bosses.

5 Balancing

Adding a prompter to any style tripod, Jib, or Cradle will always make the camera front heavy. To get the correct center of gravity the camera will more than likely need to be positioned as far back as possible.



Appendix 1

1.1



1.2



1.3



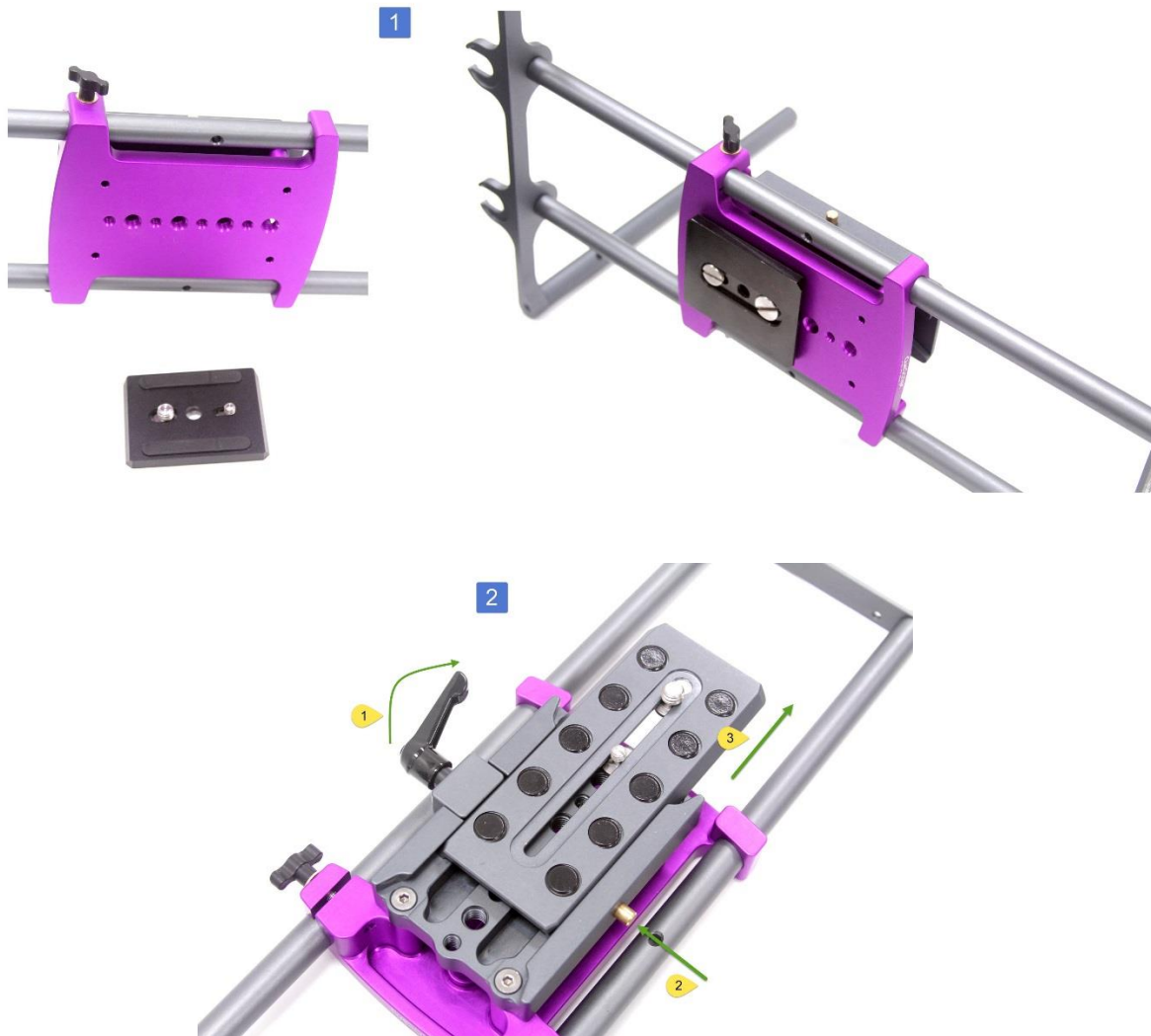
Appendix 2

2.1



Appendix 2 (cont.)

2.2

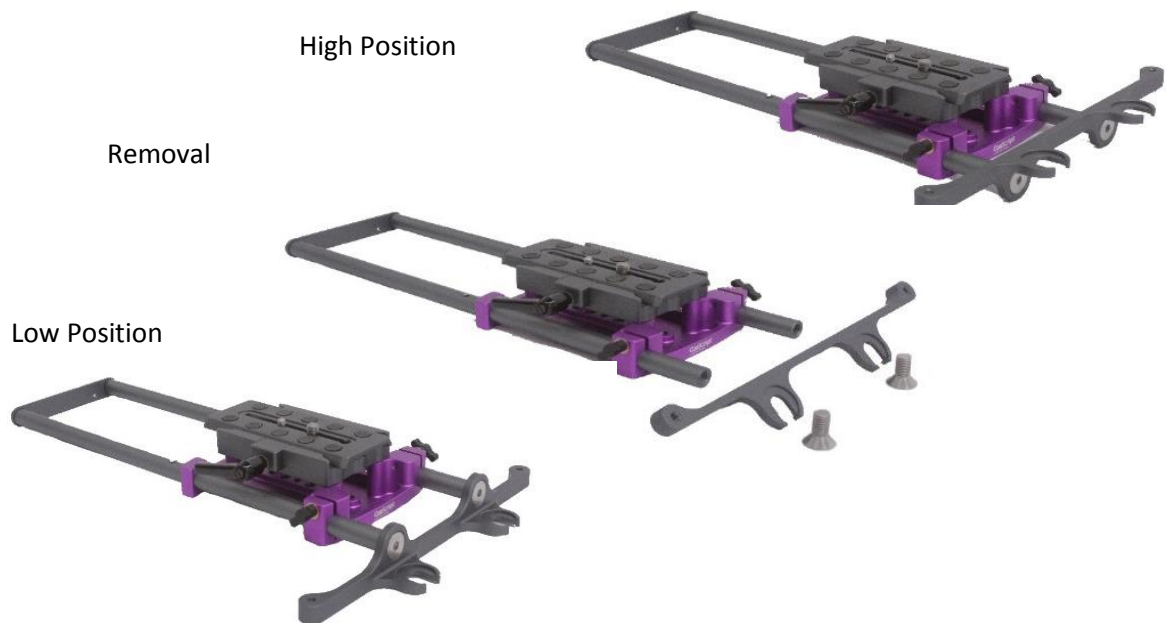


Appendix 2 (cont.)

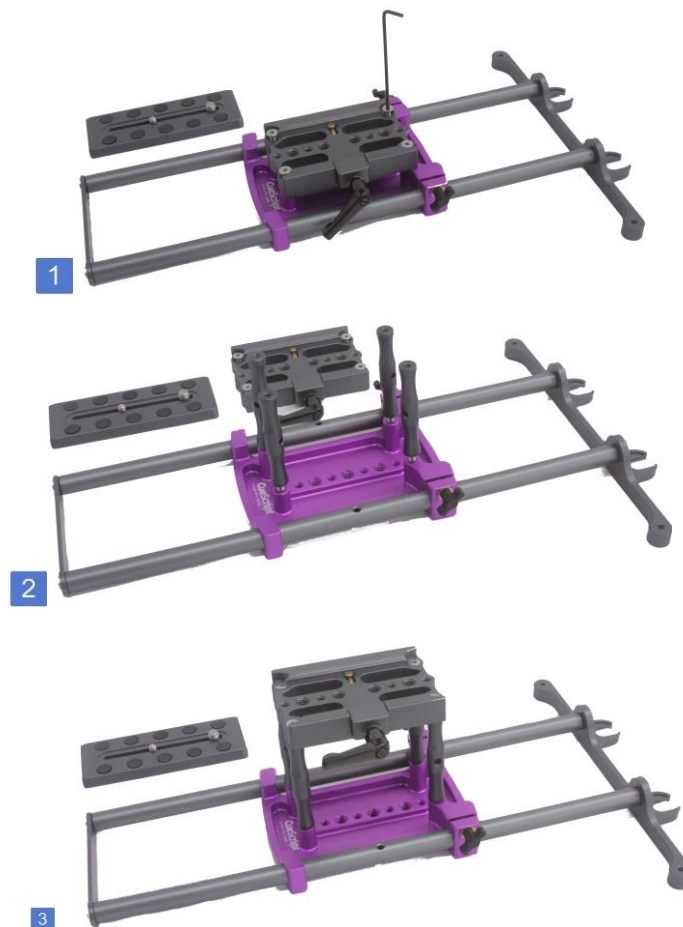


Appendix 2 (cont.)

2.3

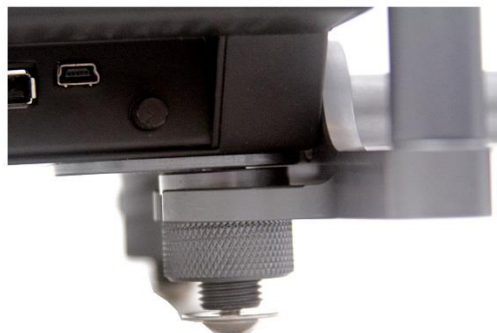


2.4



Appendix 3

3.1



Appendix 3 (cont.)

3.2



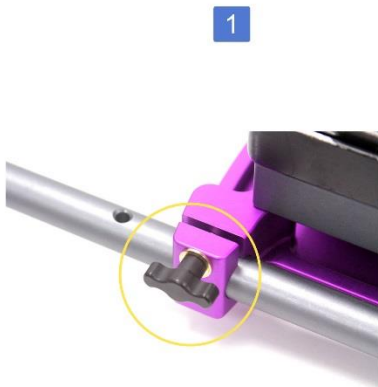
8

Appendix 3 (cont.)



Appendix 3 (cont.)

3.3



Appendix 4



This image shows a single sheet of white paper with horizontal ruling lines. The lines are evenly spaced and run across the width of the page. There are no margins, text, or other markings on the paper.

CUESCRIPT

Victoria House
Harestone Valley Road
Caterham, Surrey CR3 6HY
T: +44 (0) 20 3757 8880

16

Parts, Assembly and Mounting