



# CUESCRIPT CUEPAD MANUAL





## Contents

1	CuePad Overview .....	3
2	CuePad Licensing.....	3
3	Downloading CuePad .....	6
4	Starting the CuePad.....	7
5	CuePad Devices in Cueit .....	7
6	CuePad Settings.....	9
7	Deleting CuePad Devices in Cueit .....	9
8	How To Use CuePad On The iPad And iPhone.....	10
9	Network Behavior .....	11



## 1 CuePad Overview

CuePad is a mobile teleprompting application for iPad and iOS devices that integrates with the CueScript ecosystem. It is designed to operate with CueiT (version 3.7.0 or later) and requires a license for activation. The application uses the same rendering technology, CueTALK, as CueScript V2 monitors, providing consistent scrolling behavior along with full mirror and flip functionality. CuePad connects to CueiT over a network, including local or VPN-based configurations, and is intended for use in mobile and lightweight setups such as handheld cameras, jibs, and small production environments.

## 2 CuePad Licensing

CuePad is an add-on license to the CueiT software. Purchase through CueScript or your local dealer is required to activate this feature. The add-on is tied to the 10-digit licensed device (CueB, openCueB, CueVue4 or dongle). Please contact CueScript for more information if you have not purchased an add-on license yet.

When CuePad is purchased, you will be able to request how many “seats” you require.

The term “seats” refers to the number of CuePad devices allowed to connect to CueiT simultaneously.

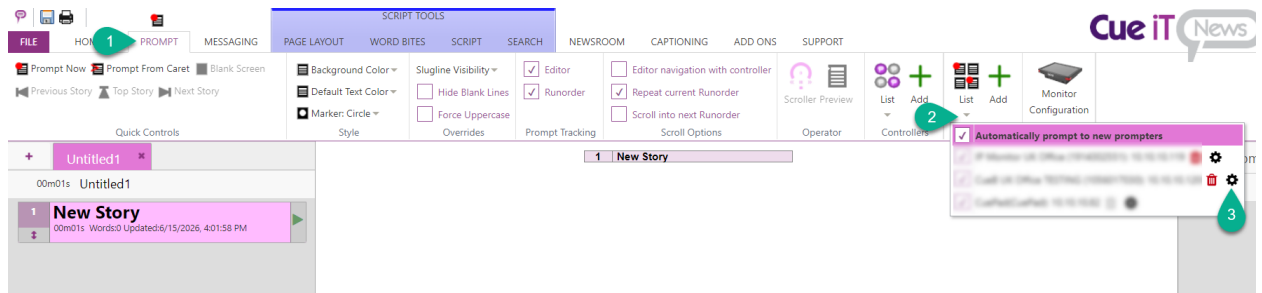
Once an add-on license is purchased you will need to refresh your registration through CueiT or request an offline registration to apply the add-on.

To refresh your registration through CueiT please follow the steps:

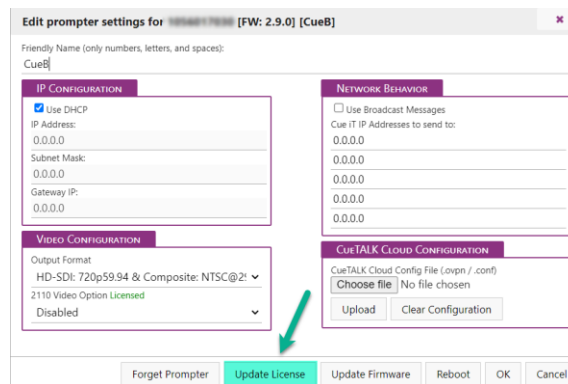
*\*You will need CueiT version 3.7.0 or higher installed before you can register and use CuePad\**



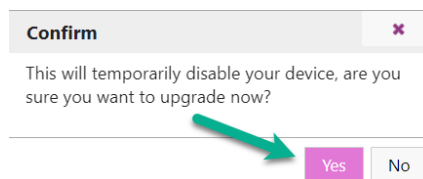
- In CueiT go to Prompt Tab -> Prompters Section -> List and click on “gear” icon next to your device to open device settings window:



- In device settings window click on “Update License”.

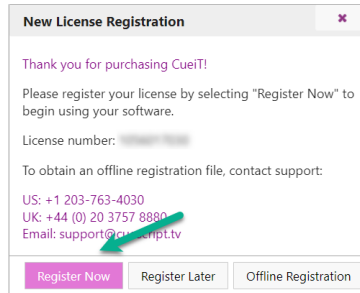


- Confirm your selection by clicking “Yes”.

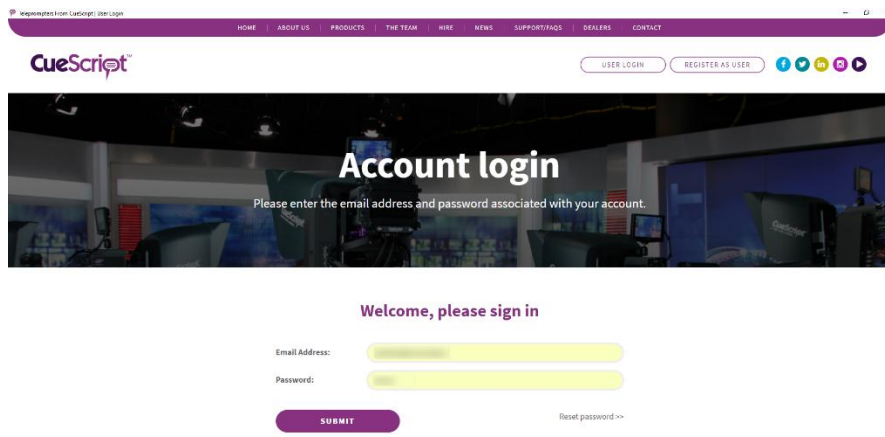




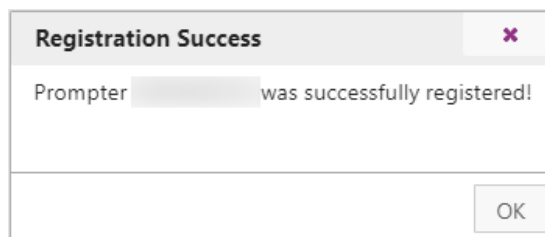
- Wait until “New License Registration” window will show up and select “Register Now”.
  - If you are using an offline registration file choose “Offline Registration here instead.



- Registration website window will show up. Provide your account credentials and select “Submit”.



- “Registration Success” window will pop up. Click OK and wait 10 seconds for your device to be recognized by CueiT with renewed license.





### 3 Downloading CuePad

First, download [CuePad](#) from the Apple App Store on your iPad or iPhone device. The app is free to install and is compatible with both iPhones and iPads. iOS 16.6 or higher is required.

App Store Icon:



CueiT should have a license for CuePad active to allow the connection from the CuePad app.

If your Prompt Device (CueB, OpenCueB, CueVue4 or Dongle) has this license applied you will see a indication within your toolbar on CueiT to the number of allowed verses connected license:

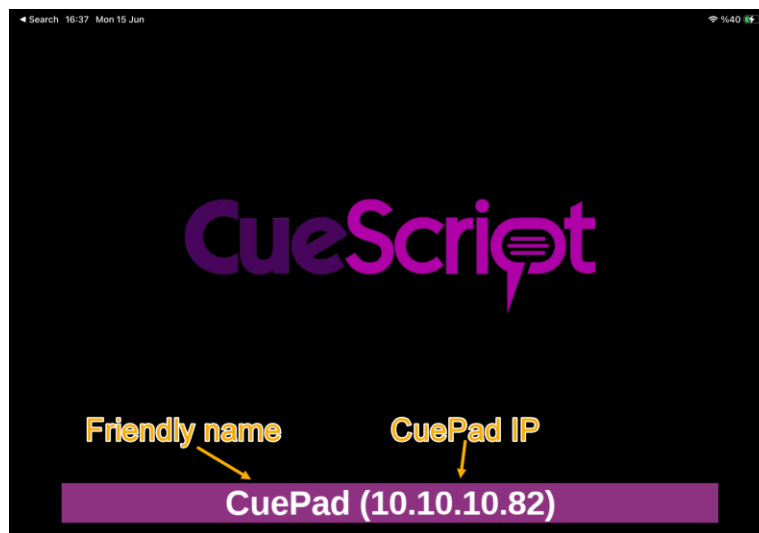


*If you do not see this, please contact support to obtain a quote and purchase the CuePad add-on.*



## 4 Starting the CuePad

Once CuePad is installed on your iPhone or iPad, launch the app by tapping the icon. The app operates similarly to a CueScript monitor and will display the device's IP address on the splash screen while waiting for a connection to CueiT.



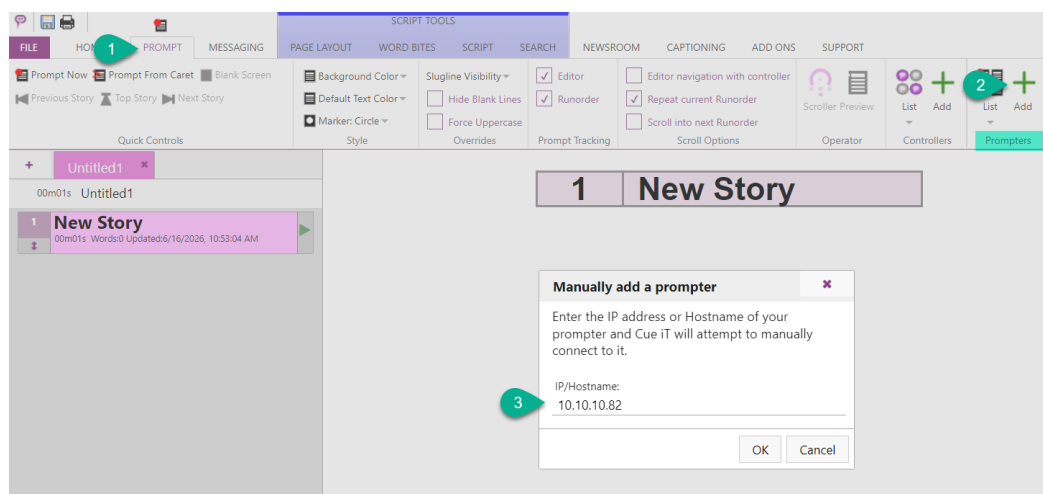
CuePad will also broadcast on the network to automatically discover and connect to available CueiT systems within the same subnet in local network.

## 5 CuePad Devices in CueiT

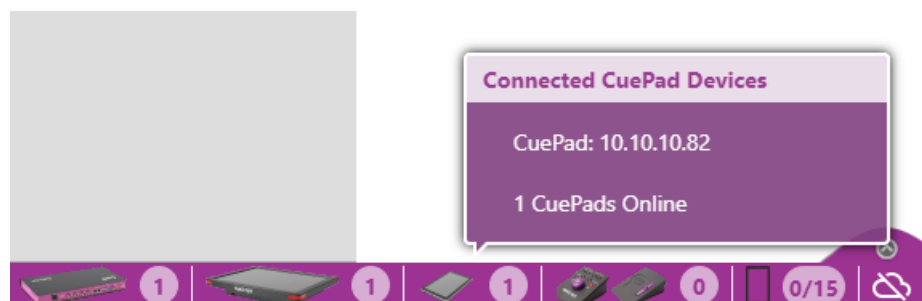
CuePad devices show up in the Prompters list in the CueiT application under the Prompt tab, just like licensed devices and monitors.

If the CuePad does not automatically show up, you can manually add it.

To do this, head to the Prompt tab, go to the Prompters section, and click on the plus symbol. In the dialog box that appears, type the IP address that is displayed on the output of the CuePad device.



Once the CuePad device is added it will be displayed on the bottom status bar of Cue iT

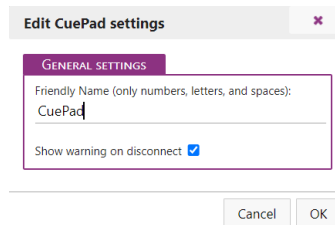




## 6 CuePad Settings

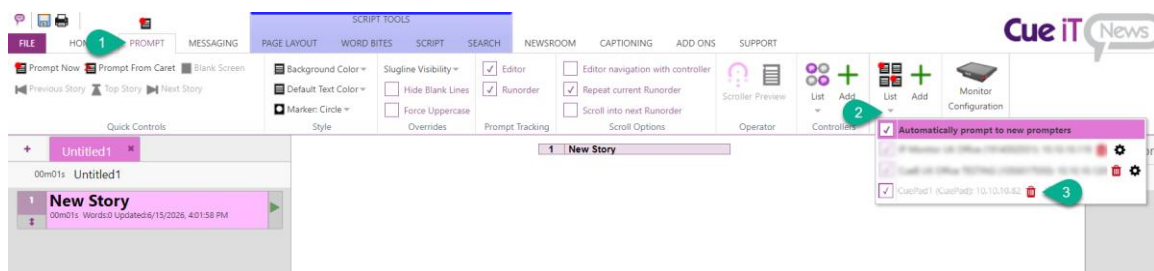
CuePad settings can be accessed from the Prompt tab in the prompters section by using the drop-down list and clicking on the settings gear.

In that window, you can change the friendly name of the CuePad, which will then be displayed on the splash screen of the CuePad application.



## 7 Deleting CuePad Devices in CueIT

To remove stale CuePad devices, navigate to the **Prompt** tab and open the **Prompter List** section. Locate the connected CuePad device you wish to remove, then click the **Bin** (Trash Can) icon next to the device entry to revoke its access and remove it from the list.

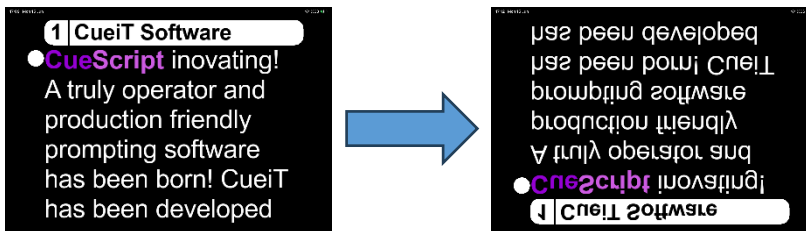


## 8 How to use CuePad on the iPad and iPhone

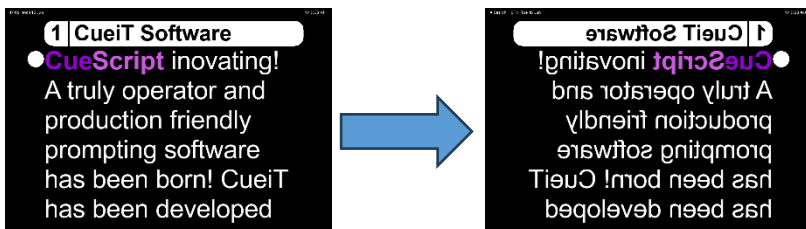
Launch the CuePad app on your iPhone or iPad to view the splash screen, which displays the CueScript logo, your device name, and the IP address. Once prompting begins, swipe with two fingers in your preferred direction to adjust the text layout. The app supports standard up, down, and left-to-right reading orientations, alongside mirrored text for prompting glass setups.



Two fingers Swipe up or down



Two fingers Swipe left or right



## 9 Network Behavior

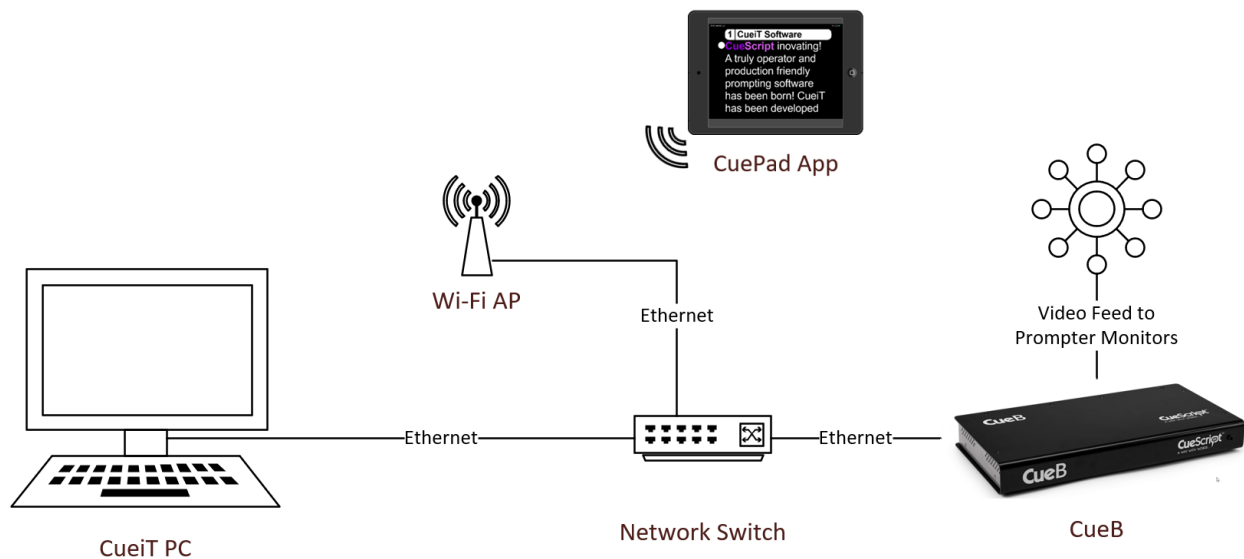
You can connect the device using either a wireless or wired network connection.

- **Wi-Fi Connection:** Connect the device wirelessly by ensuring it is connected to the same local network as the PC running CueiT.
- **Wired Ethernet Connection:** For a more reliable connection, connect the device to the network using an Ethernet cable and a compatible Lightning or USB-C to Ethernet adapter.

**Network Configuration:** CuePad does not manage its own IP address settings. All network configuration, including IP addressing (DHCP or Static IP), is managed through the iOS or iPadOS operating system settings. The current IP address assigned to the device is always displayed on the CuePad idle screen, making it easy to identify and verify network connectivity.

**VPN Support:** CuePad operates using the network connectivity provided by iOS or iPadOS and is fully compatible with VPN connections configured at the operating system level. This includes both built-in VPN support and third-party VPN applications. When connected via a VPN, CuePad can communicate with CueiT systems across remote networks, provided that the required network routing and firewall rules are in place.

### Standard Network Configuration Diagram:





## Contact CueScript

---

### US OFFICE

555 Lordship Blvd  
Stratford  
CT, 06615  
T: +1(203)763-4030

### UK OFFICE

Unit 15, First Quarter Business Park  
Blenheim Road  
Epsom, Surrey, KT19 9QN  
T: +44 (0) 20 3757 8880

**24 Hour Support:** +1(203) 692 4856

[support@cuescript.tv](mailto:support@cuescript.tv)

[www.cuescript.tv](http://www.cuescript.tv)

[Ask for TeamViewer Support!](#)