

CueScript

A WAY WITH WORDS...

EMC On-Camera Prompters

Parts, Assembly and Mounting Manual



Contents

CueScript Prompter Package Parts	3
Monitors.....	3
Hoods.....	3
Mount.....	4
Optional Accessories.....	4
Mount Setup	5
Monitor Setup.....	7
Molded Hood & Glass Setup	8
Collapsible Hood & Glass Setup	10
Balancing & Weights	12
Mounting Weights	12
Final Adjustment	13
Contact Us:.....	13

CueScript Prompter Package Parts

Monitors

15" (EMC15SDI) or 17" (EMC17SDI)



All monitors include the following: Center Pin Power supply (P-PSCP)



Hoods

Molded: Medium (CSHM) or Large (CSHL)



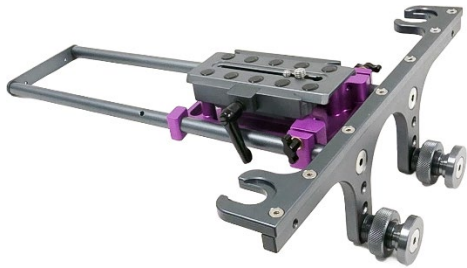
OR

Collapsible (CSHCM)



Mount

Medium Purple Medium(CSMPE)



Optional Accessories

Camera Riser: 3" Risers (CSMPSRS) (x4 Stands only)

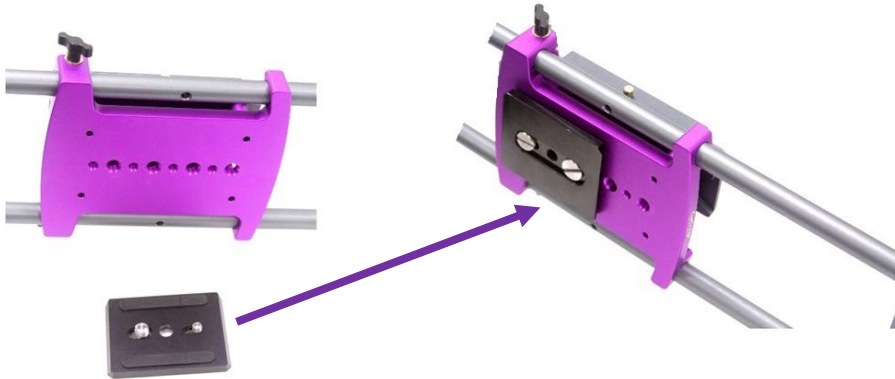


Balance Weights: CSBW4M - 14lbs/6.4kg

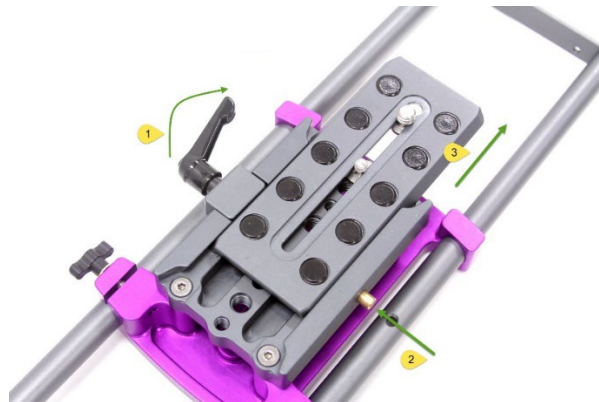


Mount Setup

1. Attach the Mount Purple (CSMPE) to the tripod wedge plate using 3/8" or 1/4 20" camera screws.



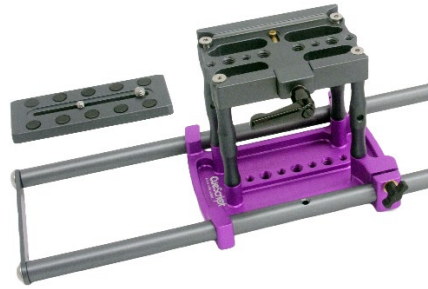
2. Remove the Cuescript wedge plate from the Quick Release shoe, by loosening the Kip lever located on the right hand side of the Quick Release plate, and holding the brass safety button on the opposite side.



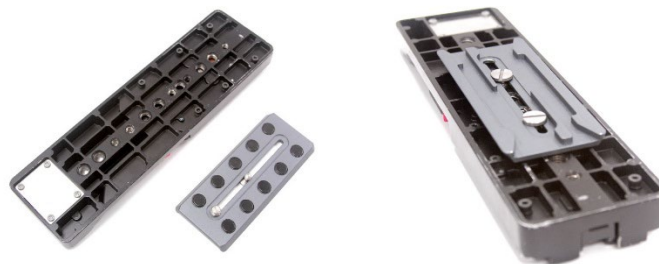
3. If you are using a riser, this will be mounted now:

Riser (Optional Accessory):

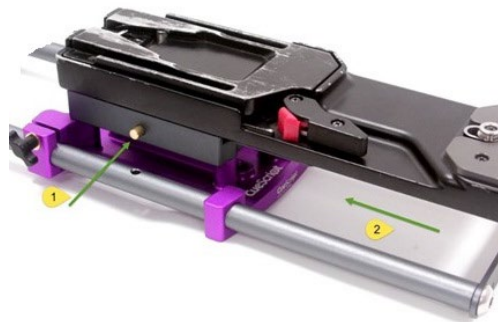
1. Remove the CueScript Camera Plate. This can be done by loosening the kip lever, and holding the brass release lock button until the plate slides out.
2. Remove the 4 hex head screws, that hold the quick release shoe onto the Mount Purple Small.
3. Screw the four 3" stilts into the Mount Purple small until they are tight.
4. Mount the Quick Release shoe onto the four 3" stilts using the four hex head screws.



4. Once the plate has been removed, attach it to the camera using the 1/4 20" and 3/8th-16 screws provided.



5. Slide the Cuescript wedge plate into mount purple, making sure to press the brass safety button to allow attachment.

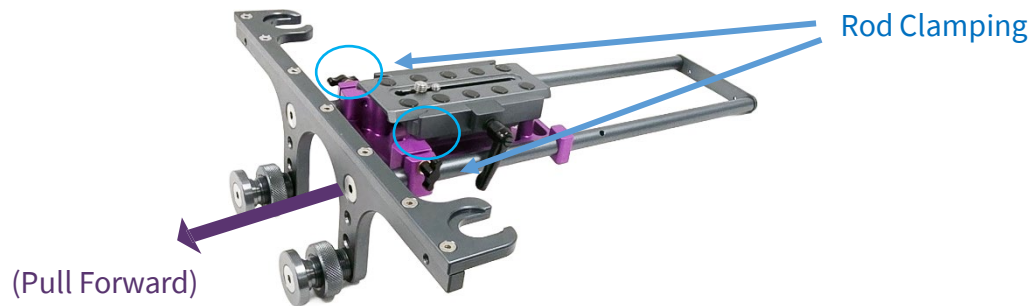


6. Tighten the Kip lever, on both sides.

Make sure the support head is locked before mounting the remaining hardware.

Monitor Setup

1. Adjust the rods forward to allow room to attach the hardware:
2. Loosen rod clamping knobs
3. Pull rod system forward



4. Tighten rod clamping knobs again for monitor mounting.
5. Loosen the monitor locating bosses



6. Drop the monitor into the bosses then tighten bosses



Molded Hood & Glass Setup

1. Loosen hood rod clamping knobs and drop hood rods to furthest position to allow room to mount.

DO NOT REMOVE THE TOP SECURITY SCREW



2. Tighten hood rod clamping knobs.
3. Drop hood rod bosses into hood receptacles on mount purple.
4. Tighten hood bosses to fasten hood.
5. Loosen hood rod clamping knobs to drop hood into proper position.



6. Tighten clamping knobs into place.

7. Remove top three screws on hood.
8. Remove top glass frame.



9. Place the bottom edge of glass on the bottom glass frame, making sure the sticker is readable from the front of the prompter. (This ensures glass is correctly oriented.)



10. With the bottom edge of the glass resting in the bottom frame, push the top of the glass to the top of the hood.
11. Place the top glass frame back in place over the glass.
12. Reattach top screws with glass secured.

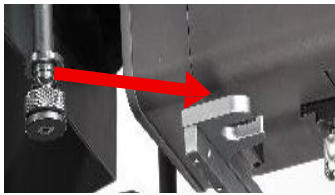
Collapsible Hood & Glass Setup

1. Unbuckle hood strap, loosen hood rod clamping knobs and drop hood rods to furthest position to allow room to mount.

DO NOT REMOVE THE TOP SECURITY SCREW



2. Tighten hood rod clamping knobs.
3. Drop hood rod bosses into hood receptacles on mount purple.



4. Tighten hood bosses to fasten hood.
5. Loosen hood rod clamping knobs to drop hood into proper position.
6. Tighten clamping knobs into place.
7. Wrap hood strap around hood rods, and re-buckle. Tighten until hood is at a 45 degree angle.

8. Flip the top over and Velcro secure.



9. Open the glass opening at top and slide glass into place.



Please note for optimal use with our travel cases, glass should not be removed each time and can travel in the folded hood.

Balancing & Weights

Adding a prompter to any style tripod will always make the camera front heavy. To get the correct center of gravity the camera will more than likely need to be positioned as far back as possible. This can be done in the following ways:

1. Obscure the off-set of the Mount Purple by attaching the camera wedge plate as far forward to the mount as possible.
2. Off-set the top purple plate so it is pulled as far back as possible (so top front screws line up with the grey riser columns)
3. Mount the camera to the back of the top purple plate; this way the camera weight will help balance the weight of the front prompter, mounts, and hood.
4. Lock the wedge plate towards the back of the tripod head, or slide the platform to the rear of the tripod head

Mounting Weights

1. Remove the rod stop plate on mount purple.



2. Loosen weight clamping knob to allow room to slide weight onto rods.



Be careful not to fully remove weight clamp, weights are heavy.

3. Tighten weight clamp knobs once weight is slid onto rods, and replace backplate

Alternative weight positions, mounting on a 45 degree angle:

1. Remove weight bars clamping knobs on top weight.
2. Turn weight bar once face, then tighten clamping knobs.
3. Add weight as described above.



Final Adjustment

1. Loosen mount purple rod clamping knobs
2. Slide hood and monitor setup back into position over camera lens, making sure to center lens in hood resting just behind glass.
3. Position lens shroud around camera lens to block all outside light from inside hood.

Contact Us:

US OFFICE

555 Lordship Blvd
Stratford
CT, 06615
T: +1(203)763-4030

UK OFFICE

Unit 15, First Quarter Business Park
Blenheim Road
Epsom, Surrey, KT19 9QN
T: +44 (0) 20 3757 8880

24 Hour Support: +1(203) 692 4856

support@cuescript.tv

www.cuescript.tv