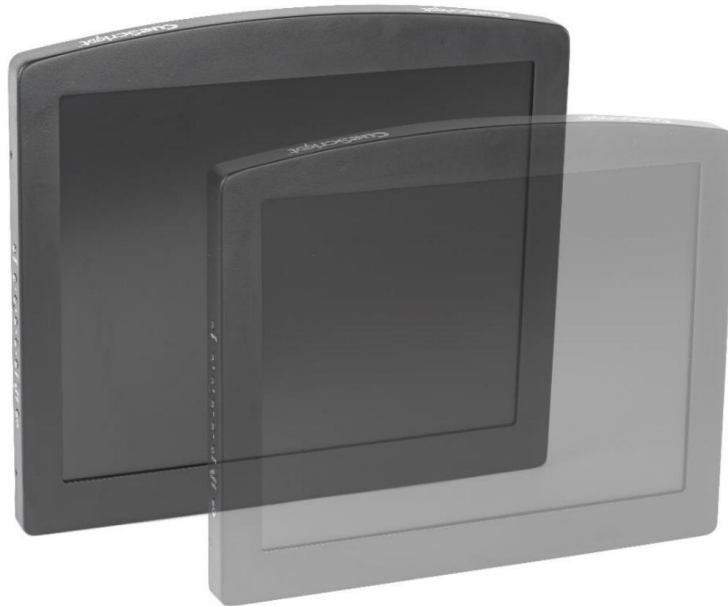




# Installation and Operation Manual

Next Generation On-Camera Prompter Displays



Model EMC15 & EMC17 Prompter Monitors

## Contents

1.0 Introduction .....	3
2.0 CueScript EMC Prompter Monitors Features .....	3
3.0 Display Technical Specifications .....	4
3.1 Model EMC15 .....	4
3.2 Model EMC17 .....	4
4.0 Signal I/O .....	4
5.0 Power Requirements .....	5
6.0 Dimensions .....	5
6.1 Model EMC15 .....	5
6.2 Model EMC17 .....	5
7.0 Environmental.....	5
8.0 Routine Maintenance .....	5
9.0 Installation .....	6
9.1 Inspecting New Prompter and Accessories .....	6
9.2 Installation Requirements .....	6
10.0 Connectors and Controls .....	7
10.1 DC Power .....	7
10.2 Composite Video In (VIDEO) .....	7
10.3 VGA In (RGB in OSD) .....	8
10.4 DVI In.....	8
10.6 HDMI In .....	8
10.7 USB Type A Out.....	8
11.0 Operation.....	9
11.1 Control Panel .....	9
11.1 Buttons.....	9
12.0 Menu operation.....	11
13.0 EMC Compliance.....	15
13.3 CE Declaration .....	15
14.0 SAFETY INFORMATION .....	16
15.0 WARNINGS.....	16

## 1.0 Introduction

CueScript was created with a “clean slate” in order to design the most up to date prompters in the industry. These new **low-profile** prompters have all the **state-of-the-art** features demanded by professional prompter users. A quick, no-tools required, mounting system instantly installs the prompter to the mount.

The CueScript EMC15 and EMC17 monitors have standard Brightness LED edge-lit screens and deliver superb picture quality.

## 2.0 CueScript EMC Prompter Monitors Features

- Unique quick mount system for simple installation.
- Aluminium case with scratch resistant powder coat finish.
- USB-A 5 Volt DC power out connector for powering external devices such as CSCN CueNumber.
- Powered by 12V DC.
- Designed for maximum performance with minimum power consumption.
- Instant and dedicated four-way picture rotate pushbutton switch.
- Backlit LED pushbuttons for ease of operation.

## 3.0 Display Technical Specifications

### 3.1 Model EMC15

<b>Screen Size</b>	15.0-inch diagonal
<b>Display Area</b>	304.128(H) x 228.096(V)mm
<b>Native Resolution</b>	1024 x 768 (XGA)
<b>Brightness</b>	500 cd/m2
<b>Contrast Ratio</b>	800:1
<b>Viewing Angle</b>	176°(H), 176°(V)
<b>Backlight Technology</b>	LED

### 3.2 Model EMC17

<b>Screen Size</b>	17.0-inch diagonal
<b>Display Area</b>	337.92(H) x 270.336(V)mm
<b>Native Resolution</b>	1280 x 1024 (SXGA)
<b>Brightness</b>	500 cd/m2
<b>Contrast Ratio</b>	1000:1
<b>Viewing Angle</b>	178°(H), 178°(V)
<b>Backlight Technology</b>	LED

## 4.0 Signal I/O

All CueScript prompters are designed to accept most common video signals used in prompting. The following signals are compatible. Please contact CueScript for any special requirements.

### 4.1 Input facilities

- HDMI
- Composite PAL/NTSC/SECAM
- DVI
- VGA (RGB)

## 5.0 Power Requirements

CueScript EMC series prompter monitors are powered with 12VDC. The power consumed is as follows:

- **EMC15:** Typ: 1.08A / 12.9Watts      Max: 1.4 A / 16.9 Watts
- **EMC17:** Typ: 1.27 A / 15.2 Watts      Max: 1.6 A / 19.5 Watts

## 6.0 Dimensions

### 6.1 Model EMC15

**Outer Dimensions:** 360 mm W x 295 mm H x 49 mm D (14.17" W X 11.61" H X 1.93" D)

**Weight:** 2.45 kg. 5.4 Lb.

### 6.2 Model EMC17

**Outer Dimensions:** 396 mm W x 341 mm H x 49 mm D (15.57" W X 13.43" H X 1.93" D)

**Weight:** 2.90 kg. 6.4 Lb

## 7.0 Environmental

All CueScript prompter monitors are designed to be operated within the environment specified below.

**Temperature Range:** Operation: 5 to 40 °C / 41 to 104°F

Storage: -20 to 60 °C / 4 to 140°F

**Relative Humidity:** 0-95% Non-condensing

## 8.0 Routine Maintenance

All CueScript prompter monitors are designed to be low maintenance. Recommended maintenance is as follows:

Remove dust from the cabinet when it accumulates. The front LCD panel may be cleaned with a soft cotton cloth. Use only a small amount of mild soap and water solution to dampen the cloth if necessary.

No routine checks or adjustments are required.

## **9.0 Installation**

### **9.1 Inspecting New Prompter and Accessories**

Each item should be inspected as it is unpacked to see if any damage has occurred in shipping. If so, please file a claim with the shipping carrier. Please retain the original packaging in case it is necessary to return the unit.

Any missing items should be noted and brought to the attention of the shipper.

### **9.2 Installation Requirements**

The following requirements should be observed when installing a EMC15 or EMC17 prompter.

Do not exceed the maximum ambient temperature of 40°C / 104°F.

Do not block any ventilation holes in the prompter cabinet. Free flow of air is required for proper operation.

Use the power supply & power supply cord supplied with the unit. Connect the cord to a grounded AC mains outlet.

EMC (ElectroMagnetic Compatibility) and Safety Compliance: EMC15 & EMC17 Prompters have been designed for EMC and safety compliance. The installer or operator is responsible for compliance of the system as built and operated under the regulations governing such use.

## 10.0 Connectors and Controls



### 10.1 DC Power

The CueScript EMC Monitors require a regulated supply of 12 volts DC rated at 3 Amps. Alternatively, a battery with sufficient capacity may be used.

**Monitor Connector type:** 2.5mm X 5.5mm Male coaxial plug  
**Mating (cable) connector:** 2.5mm X 5.5mm Female coaxial socket

Pin	Description
Outer Shell	GROUND (connected to monitor chassis)
Center Pin	+12V DC

### 10.2 Composite Video In (VIDEO)

**Monitor Connector type:** 75 Ohm BNC Socket  
**Mating (source) connector:** 75 Ohm BNC Plug

Pin	Description
Centre	Composite Video In (PAL, NTSC, or SECAM)
Outer	Ground

**NOTE:** The video input is terminated in 75 Ohms.

### 10.3 VGA In (RGB in OSD)

**Description:** CueScript EMC series prompters have a PC compatible VGA input. The prompter will automatically scale the input resolution to the screen native resolution.

**Monitor Connector type:** 15 pin High Density D socket  
Pin connections are standard VGA.

### 10.4 DVI In

**Monitor Connector type:** 24 pin DVI-D (Digital Only Signal)  
Pin connections are standard DVI-D.

### 10.6 HDMI In

**Monitor Connector type:** 19 pin HDMI socket: Pin connections are standard HDMI. The input is compatible with HDMI 1.3 / 1.4 / 1.4a.

### 10.7 USB Type A Out

Provides a 0.5A source of 5 VDC to power accessories such as CSCN CueNumber.

**Monitor Connector type:** USB-A (Standard USB)  
**Mating (cable) connector:** USB-A (USB) plug

Pin	Description
1	+5 VDC
2	N/C
3	N/C
4	Ground



## 11.0 Operation

### 11.1 Control Panel



There are 7 buttons on the right side of the prompter. All of these buttons are illuminated and all of them increase brightness when touched. After a short period of time when no buttons have been pushed, they will revert to their low brightness level.

### 11.1 Buttons

#### A. Power Button

Pressing the power button will turn the monitor on. To turn the monitor off, you must press and hold the power button until the monitor turns off.

#### B. Rotate Button

Pressing the rotate button will cause the screen to “flip” in both the horizontal way and the vertical way for a total of four possible ways. Successively pressing the rotate button while watching the prompting mirror, allows for a quick set up for proper operation.

#### C. Menu keys

There is a group of four buttons arranged as Up and Down, and Left and Right. The operation of these buttons for the on-screen display is as follows:

**MENU**

- Activates or deactivates the OSD (On-Screen-Display) menu
- Reverts to one higher level menu page

**DOWN ARROW**

- Cycle through Video Inputs
- Enters a OSD sub menu

**UP ARROW**

- Cycle through Video Inputs
- Exits a OSD sub menu

**RIGHT ARROW**

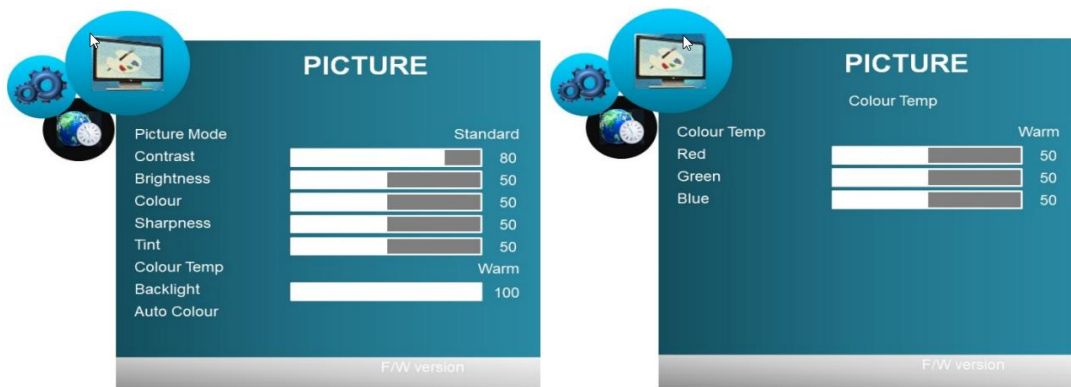
- Backlight Adjustment (default)
- Moves the OSD selection
- Increments the OSD item value

**LEFT ARROW**

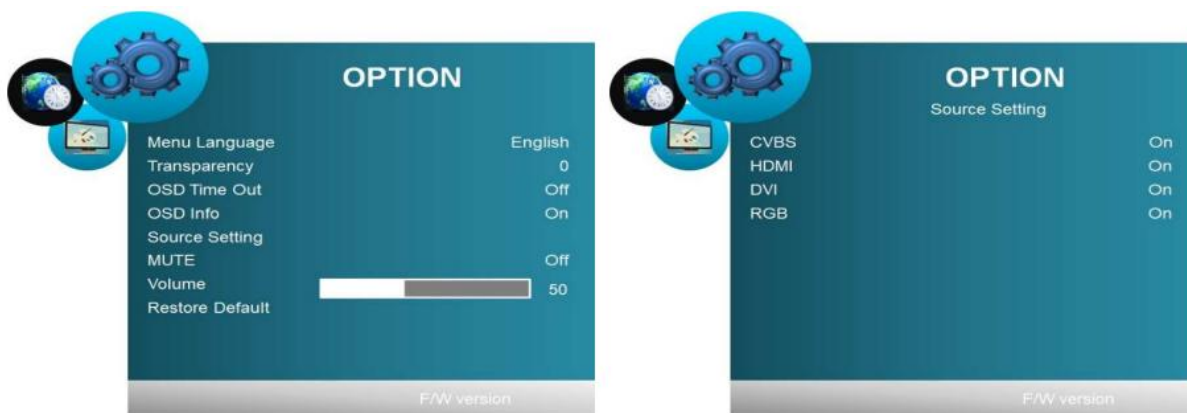
- Volume Adjustment (unused)
- Moves the OSD selection
- Decrements the OSD item value

## 12.0 Menu operation

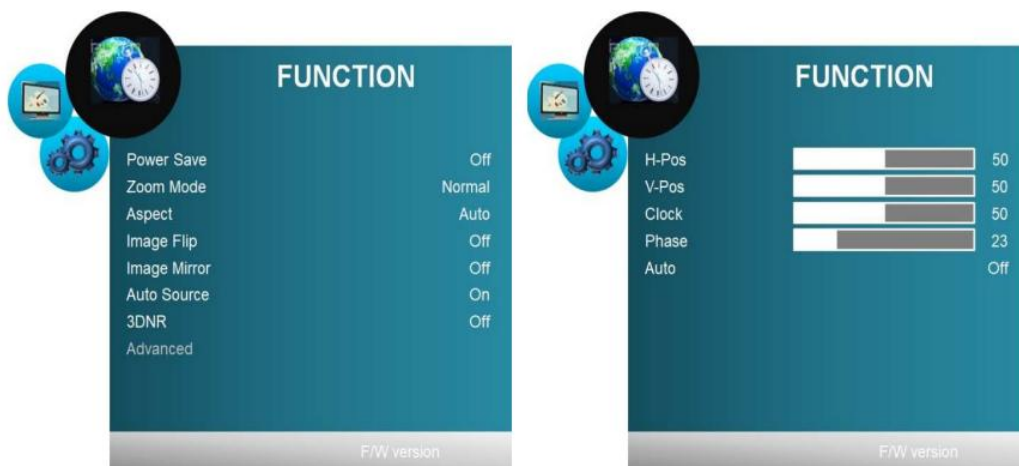
OSD MENU	Description
<b>PICTURE</b>	
<b>Picture Mode</b>	Picture preset mode. (Standard, Dynamic, User, Mild)
<b>Contrast</b>	Adjust the contrast of the screen. 0 ~ 100
<b>Brightness</b>	Adjust the brightness of the screen. 0 ~ 100
<b>Colour</b>	Adjust the colour of the screen's image. 0 ~ 100
<b>Sharpness</b>	Adjust the sharpness of the screen's image. 0 ~ 100
<b>Tint</b>	Adjust the tint of the screen's image. 0 ~ 100
<b>Color Temp</b>	Adjust color temperature of the screen's image. <b>Color Mode:</b> Warm / Medium / Cool / User Red; Green; Blue 0 ~ 100
<b>Backlight</b>	Adjust the backlight of the screen. 0 ~ 100
<b>Auto Colour</b>	Applied only to VGA (RGB Input)



OSD MENU	Description
<b>OPTION</b>	
<b>Menu Language</b>	Select the language : (English / Русский / Italiano / Nederlands / Deutsch / Español / Française)
<b>Transparency</b>	Adjust the OSD transparency level. (0 ~ 5)
<b>OSD Time Out</b>	Define OSD time out. (Off, 5Sec, 10Sec, 15Sec)
<b>OSD Info</b>	ON / OFF
<b>Source Setting</b>	CVBS / HDMI / DVI / RGB ; “ ON ” or “ OFF ” respectively  [Note] Enabled sources from Source Setting can be searched via “Auto Source” mode. Source Setting does NOT affect Manual Source Selection.
<b>Mute (unused)</b>	ON / OFF (unused)
<b>Volume (unused)</b>	0 ~ 100 (unused)
<b>Restore Default</b>	Initializing that memory by factory presetting except OSD language (Yes / No)



OSD MENU	Description
<b>FUNCTION</b>	
<b>VGA (RGB):</b> Power Save, Zoom Mode, Aspect, Image Flip, Image Mirror, Auto Source, 3DNR, Advanced	
<b>DVI &amp; HDMI &amp; CVBS :</b> Power Save, Zoom Mode, Aspect, Image Flip, Image Mirror, Auto Source, 3DNR	
<b>Power Save</b>	Adjust the Power Save time. (0 ~ 120Min) [0.5, 1, 2, 5, 10, 30, 60, 120]
<b>Zoom Mode</b>	<p>Select the zoom mode. (Normal, OverScan, Zoom).</p> <p>[Note]:</p> <p>“OverScan” mode: this is the factory default condition in general, most of target video sizes on the LCD screen mean this mode (5% zoom and cropped). Traditional CVBS input signal requires OverScan mode for general usage.</p> <p>“Normal”: Displays all available pixels into screen without cropping and zooming.</p> <p>“Zoom”: Magnifies centre of screen by 25%.</p>
<b>Aspect</b>	Auto / 16 : 9 / 4 : 3 / Fill
<b>Image Flip</b>	Image is reversed by vertical. (On, Off)
<b>Image Mirror</b>	Image is reversed by horizontal. (On, Off)
<b>Auto Source</b>	Detect the valid input source automatically. (On, Off)
<b>3DNR</b>	Select NR mode. (Off, Strong, Standard, Weak)
<b>Advanced (VGA / RGB only)</b>	<p>H-Pos: 0 ~ 100</p> <p>V-Pos: 0 ~ 100</p> <p>Clock: 0 ~ 100</p> <p>Phase: 0 ~ 100</p> <p>Auto: Auto Adjust</p>



OSD MENU	Description
<b>SETUP</b>	
<b>Serial Port</b>	Unused
<b>User Assign</b>	<p>User can assign shortcut items for following two buttons:</p> <p><b>KeyPad Up (RIGHT ARROW button):</b> Backlight (default)  <b>KeyPad Down (RIGHT ARROW button):</b> Volume (default)</p> <p>Options: Backlight, Volume, Contrast, Flip/Flop, Image Flip, Image Mirror, Mute, Mono, Colour Channel, Red Only, Green Only, Blue Only, Zoom</p>
<b>Other</b>	Unused



## 13.0 EMC Compliance

The CueScript EMC15 & EMC17 series prompter monitors have been tested by TUV Rhineland and are compliant with the following standards:

### 13.1 Guidance Documents

Emissions: EN55103-1:1996

Immunity: EN55103-2:1996

### 13.2 Test Methods

Emissions: EN55022:2010 & FCC Part 15

EN61000-3-2:2006 +A1:2009 +A2:2009, EN61000-3-3:2013

Immunity: EN55024:2010,

EN61000-4-2:2009, EN61000-4-3:2006 + A2:2010,

EN61000-4-4:2012, EN61000-4-5:2006, EN61000-4-6:2009,

EN61000-4-8:2010, EN61000-4-11:2004

Meets requirements for VCCI 2010. (Japan)

### 13.3 CE Declaration



The CueScript EMC15 & EMC17 prompter monitors are compliant with all applicable directives necessary for declaration of conformity. All models are RoHS compliant, and all models have the CE mark affixed.

## 14.0 SAFETY INFORMATION

The CueScript model EMC15 & EMC17 prompter monitors are not user serviceable. Please return to CueScript in the event that servicing is required. After any servicing, the CueScript service centre will re-test each prompter to ensure product safety is intact.

In no event should any modification be made to any CueScript prompter without authorization from CueScript. Doing so without authorization will void the warranty and may affect the safety of the product.

## 15.0 WARNINGS

The following warning symbol and stipulation appear on the underside of the CueScript monitors:



WARNING: NO USER SERVICEABLE PARTS INSIDE

The CueScript prompters utilize switching power supplies which inherently have high voltages appearing within the circuitry. Specialized equipment and skill are required to service this equipment.

In addition, the following warning is given: **THIS EQUIPMENT MUST BE EARTH GROUNDED.**

To minimise the risk of electric shocks or other hazards, the AC mains power cord must be connected to a grounded/earthed supply.



This image shows a single sheet of white paper with horizontal blue ruling lines. The lines are evenly spaced and run across the width of the page. There are approximately 20 lines visible. The paper has a slightly textured appearance and is set against a dark background.

---

CUESCRIPT

---

[www.cuescript.tv](http://www.cuescript.tv)