

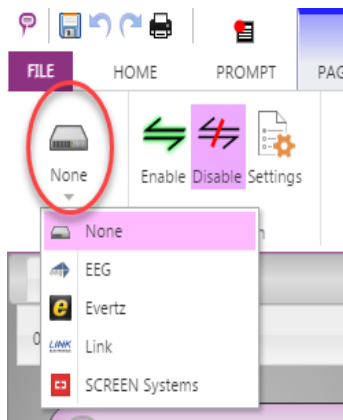
# Connecting to Closed Captioning

## How to connect to Closed Captioning:

1. Select the Captioning Tab.



2. From the device drop down select your device.



3. Once selected open the "Settings" to configure:





Each captioneer has different setting requirements:

EEG:

**COM2** COM Port  
1200 Baud Rate  
seven Data Bits  
one Stop Bits  
odd Parity  
 **No** Use Hardware Flow Control  
Open Command  
^F^F^C^A6 CC1^M^A2 3 b15^M  
Close Command  
^C^A7 CC1^M  
Pre-line access  
Line Offset from Cue Marker: 2  
OK Cancel

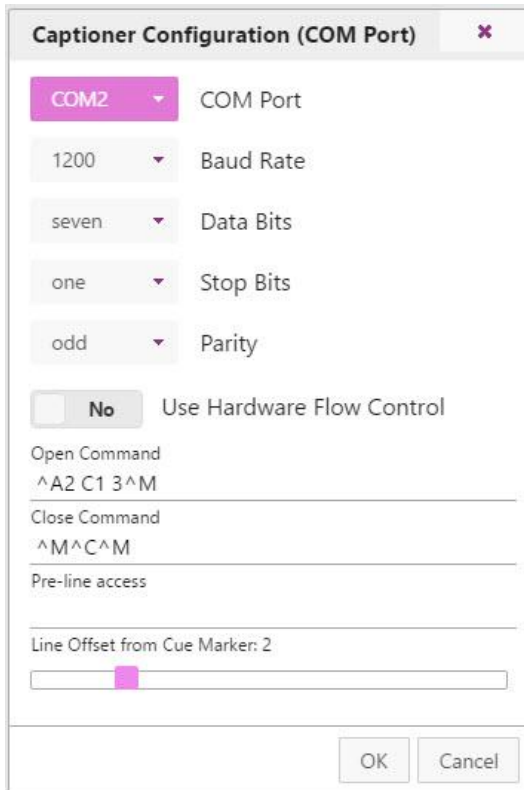
#### EEG Settings:

- **COM Port, Baud Rate, Data Bits, Stop Bits, and Parity:** Set these to match the encoder settings. (These also need to match in the driver properties for the COM port in Windows)
- **Open Command, Closed Command, and Pre-line access:** Control-A codes that should be pre-filled depending on the encoder chosen.

#### Additional Options:

- **Use Hardware Flow Control:** If checked, enables this feature on the COM port if the device is set up to use it.
- **Line Offset from Cue Marker:** a slider for how many lines the captioneer will be offset from the current prompt. If captioning is coming out too slow, increase this number. If captioning is coming out too soon, decrease this number.

Evertz:



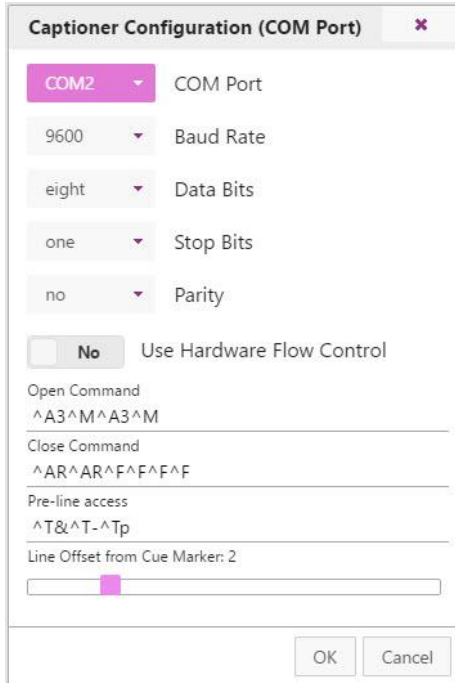
Evertz Settings:

- **COM Port, Baud Rate, Data Bits, Stop Bits, and Parity:** Set these to match the encoder settings. (These also need to match in the driver properties for the COM port in Windows)
- **Open Command, Closed Command, and Pre-line access:** Control-A codes that should be pre-filled depending on the encoder chosen.

Additional Options:

- **Use Hardware Flow Control:** If checked, enables this feature on the COM port if the device is set up to use it.
- **Line Offset from Cue Marker:** a slider for how many lines the captioner will be offset from the current prompt. If captioning is coming out too slow, increase this number. If captioning is coming out too soon, decrease this number.

Link:



#### Link Settings:

- **COM Port, Baud Rate, Data Bits, Stop Bits, and Parity:** Set these to match the encoder settings. (These also need to match in the driver properties for the COM port in Windows)
- **Open Command, Closed Command, and Pre-line access:** Control-A codes that should be pre-filled depending on the encoder chosen.

#### Additional Options:

- **Use Hardware Flow Control:** If checked, enables this feature on the COM port if the device is set up to use it.
- **Line Offset from Cue Marker:** a slider for how many lines the captioner will be offset from the current prompt. If captioning is coming out too slow, increase this number. If captioning is coming out too soon, decrease this number.

4. Once configured, select OK and then “Enable” to connect to the captioner:



5. Connections to the Closed Captioning encoder will start.

SCREEN Systems:

Screen Systems U4000 Captioner Conf. ✕

Server IP/Hostname:  
0.0.0.0

Server Port:  
14001

OK Cancel

SCREEN Systems Settings:

- **Server IP/Hostname:** Set the IP for the SCREEN System.
- **Server Port:** Set the network port, default port setting is 14001



## Additional Control Commands:

### Special Characters:

If you require any accented or extended characters you will need to use a direct captioning mode which can be implemented with the following control codes:

Open Command

`^A3 C1 3^M`

---

Close Command

`^M^C^M`

---

Pre-line access

`^T&^T-^Tp`

---